



# T5444A-PA160 SYSTEM DATASHEET



SYSTEM PERFORMANCE	METRIC	IMPERIAL
Sine Force Peak kN (lbf)	52.90	11,892
Random Force rms kN (lbf)	42.32	9,514
Shock Force (6ms) kN (lbf)	105.80	23,785
Useful Frequency Range Hz	5 - 2300	5 - 2300
Continuous Displacement mm (in)	100	3.9
Shock Displacement mm (in)	100	3.9
Max Velocity m/s (in/s)	2.4	94.5
Max Acceleration Sine Peak m/s <sup>2</sup> (g)	184	80

Air-cooled system ideally suited to testing medium-sized electronic parts, flight and ground vehicle components and assemblies.

- Continuous displacement 100 mm (3.9 in)
- Useable frequency range 5 - 2300 Hz
- Max static payload 800 kg (1764 lb)
- Air-cooled amplifier efficiency > 90%
- Rugged isolated trunnion

T5444A SHAKER	METRIC	IMPERIAL
Armature Diameter mm (in)	445	17.5
Armature Material	Al	Al
Effective Armature Mass kg (lb)	68	150
Armature Insert Pattern PCD mm (in) plus 1 in center	8-160/8-280/8-400	8-6/8-11/8-16
Armature Insert Threads	M12	1/2-13 UNC
First Resonant Frequency (bare table) ±5% Hz	1,900	1,900
Max Static Payload kg (lb)	800	1,764
Natural Frequency Thrust Axis Hz	< 5	< 5
Stray Flux Density gauss	< 10	< 10
Shaker Weight Uncrated kg (lb)	4,300	9,480
Dimensions Uncrated (W x D x H) mm (in)	1570 x 1100 x 1320	61.8 x 43.3 x 52.0

**SLIP TABLES**  
Mono-base slip tables in a wide-range of sizes and configurations for maximum over-turning moment and cross-axial restraint

PA160 POWER AMPLIFIER	METRIC	IMPERIAL
Number of Sub-modules Supplied	14	14
Rated Power Output kVA	66	66
Rated Output Voltage V rms	100	100
Rated Output Current A rms	570	570
Number of Cabinets	1	1
System Required Power kVA	95	95
Amplifier Weight Uncrated kg (lb)	960	2,116
Dimensions Uncrated (W x D x H) mm (in)	580 x 850 x 1900	22.8 x 33.5 x 74.8

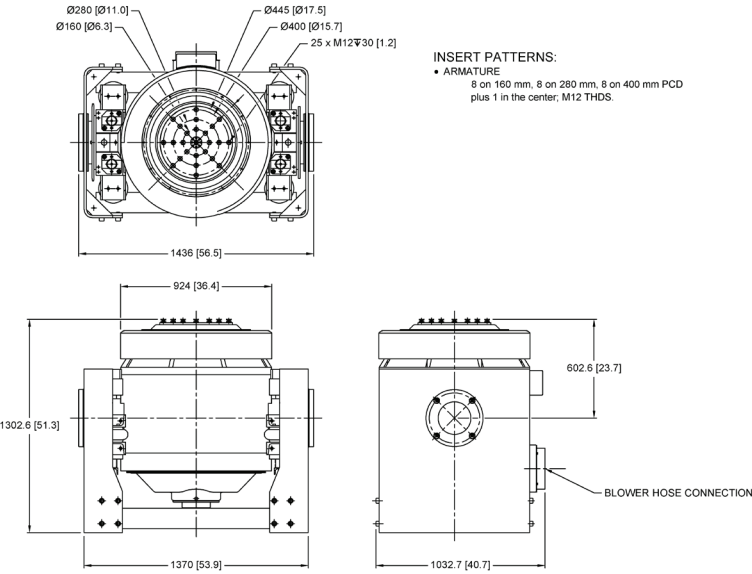
**OPTIONS & ACCESSORIES**  
Sentek Dynamics offers a wide selection of options and accessories for unique applications and complete turn-key systems.

- Custom armature and slip table insert patterns and threads available
- Air-isolation feet, pads and mounts to eliminate need for seismic floor
- Thermal barrier for use with environmental test chambers
- Remote control panel for remote operation

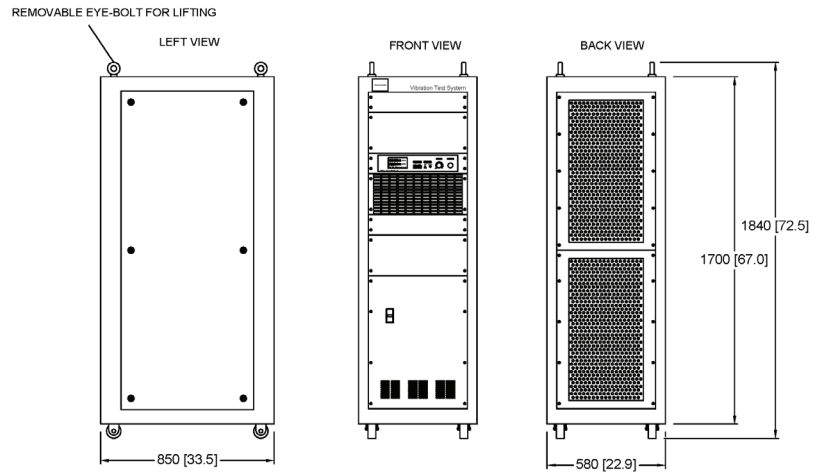
BU-5 BLOWER	METRIC	IMPERIAL
Standard Air Hose Length m (ft)	5	16.4
Hose Diameter mm (in)	250	9.8
Blower Unit Weight Uncrated kg (lb)	466	1027
Dimensions (W x D x H) mm (in)	1300 x 1100 x 2000	51.2 x 43.3 x 78.7



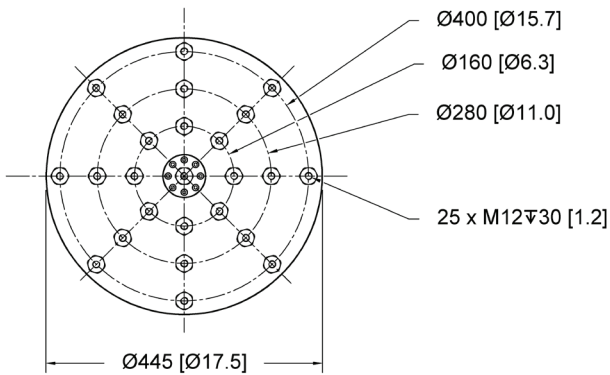
## SHAKER MODEL T5444A



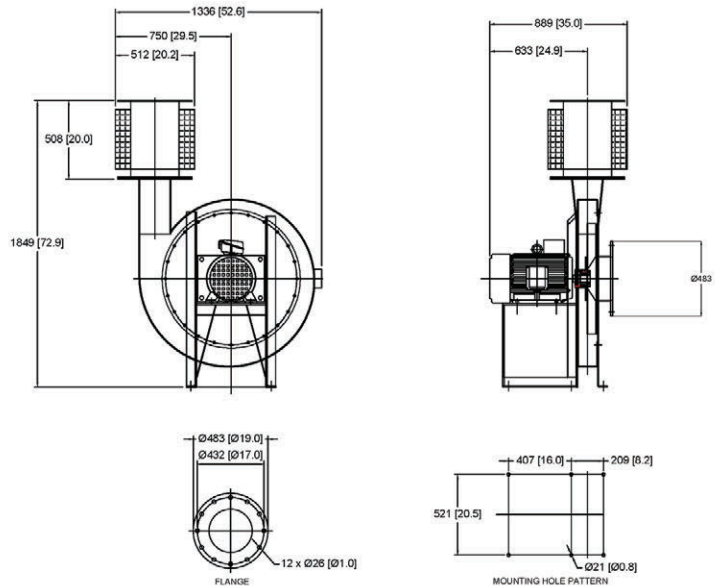
## POWER AMPLIFIER MODEL PA160



## ARMATURE INSERT PATTERN



## BLOWER UNIT MODEL BU-5



SENTEK DYNAMICS  
2370 OWEN STREET  
SANTA CLARA, CA 95054  
UNITED STATES OF AMERICA

PHONE: +1.408.200.3100 | FAX: +1.408.659.8229 | WWW.SENTEKDYNAMICS.COM | SALES@SENTEKDYNAMICS.COM

© 2017 Sentek Dynamics, All Rights Reserved. 06/2017

Notice: This document is for informational purposes only and does not set forth any warranty, expressed or implied, concerning any equipment, equipment feature, or service offered or to be offered by Sentek Dynamics. Sentek Dynamics reserves the right to make changes to this document at any time, without notice, and assumes no responsibility for its use. This informational document describes features that may not be currently available. Contact a Sentek Dynamics sales representative for information on features and product availability.