

# M6544A-PA170 SYSTEM DATASHEET

| SYSTEM PERFORMANCE                              | METRIC   | IMPERIAL |
|---|----------|----------|
| Sine Force Peak kN (lbf)                        | 63.70    | 14,320   |
| Random Force rms kN (lbf)                       | 63.70    | 14,320   |
| Shock Force (6ms) kN (lbf)                      | 127.40   | 28,640   |
| Useful Frequency Range Hz                       | 5 - 2200 | 5 - 2200 |
| Continuous Displacement mm (in)                 | 51/76*   | 2.0/3.0* |
| Shock Displacement mm (in)                      | 51/76*   | 2.0/3.0* |
| Max Velocity m/s (in/s)                         | 2        | 78.7     |
| Max Acceleration Sine Peak m/s <sup>2</sup> (g) | 980      | 100      |

Air-cooled system ideally suited to test medium-sized electronic parts, flight and ground vehicle components and assemblies.

- Continuous displacement 51 mm (2.0 in) / 76 mm (3.0)
- Useable frequency range 5 - 2200 Hz
- Max static payload 1000 kg (2205 lb)
- Air-cooled amplifier efficiency > 90%
- Rugged air-isolated trunnion

\* With LSO Option

| M6544A SHAKER  | METRIC             | IMPERIAL           |
|--|--------------------|--------------------|
| Armature Diameter mm (in)                            | 445                | 17.5               |
| Armature Material                                    | Al                 | Al                 |
| Effective Armature Mass kg (lb)                      | 60                 | 132                |
| Armature Insert Pattern PCD mm (in) plus 1 in center | 8-160/8-280/8-400  | 8-6/8-11/8-16      |
| Armature Insert Threads                              | M16                | 5/8-11UNC          |
| First Resonant Frequency (bare table) ±5% Hz         | 1,800              | 1,800              |
| Max Static Payload kg (lb)                           | 1,000              | 2,205              |
| Natural Frequency Thrust Axis Hz                     | < 5                | < 5                |
| Stray Flux Density gauss                             | < 10               | < 10               |
| Shaker Weight Uncrated kg (lb)                       | 4,500              | 9,921              |
| Dimensions Uncrated (W x D x H) mm (in)              | 1670 x 1050 x 1133 | 65.7 x 41.3 x 44.6 |

## SLIP TABLES

Mono-base slip tables in a wide-range of sizes and configurations for maximum over-turning moment and cross-axial restraint

## OPTIONS & ACCESSORIES

Sentek Dynamics offers a wide selection of options and accessories for unique applications and complete turn-key systems.

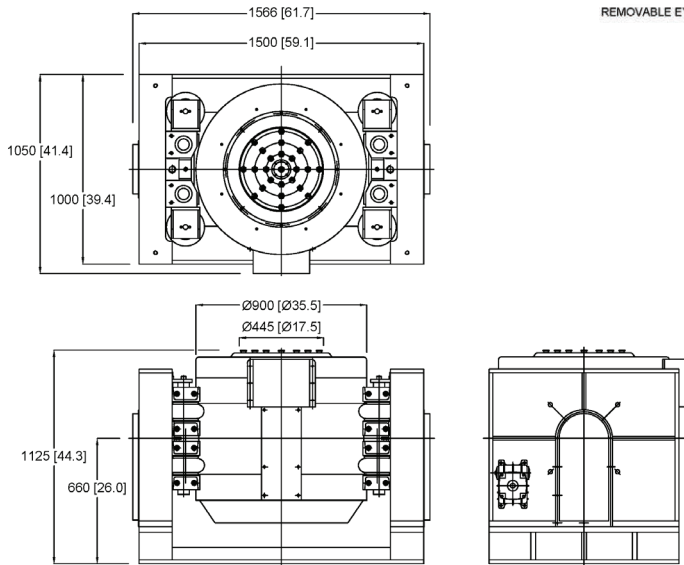
- Specify Metric or Imperial armature insert pattern & thread. Custom armature and slip table insert patterns and threads available.
- Air-isolation mounts eliminate need for seismic floor
- Thermal barrier for use with environmental test chambers
- Remote control panel for remote operation

| PA170 POWER AMPLIFIER                   | METRIC           | IMPERIAL           |
|---|------------------|--------------------|
| Number of Sub-modules Supplied          | 14               | 14                 |
| Rated Power Output kVA                  | 70               | 70                 |
| Rated Output Voltage V rms              | 105              | 105                |
| Rated Output Current A rms              | 670              | 670                |
| Number of Cabinets                      | 1                | 1                  |
| System Required Power kVA               | 110              | 110                |
| Amplifier Weight Uncrated kg (lb)       | 710              | 1,565              |
| Dimensions Uncrated (W x D x H) mm (in) | 580 x 850 x 1840 | 22.8 x 33.5 x 72.4 |

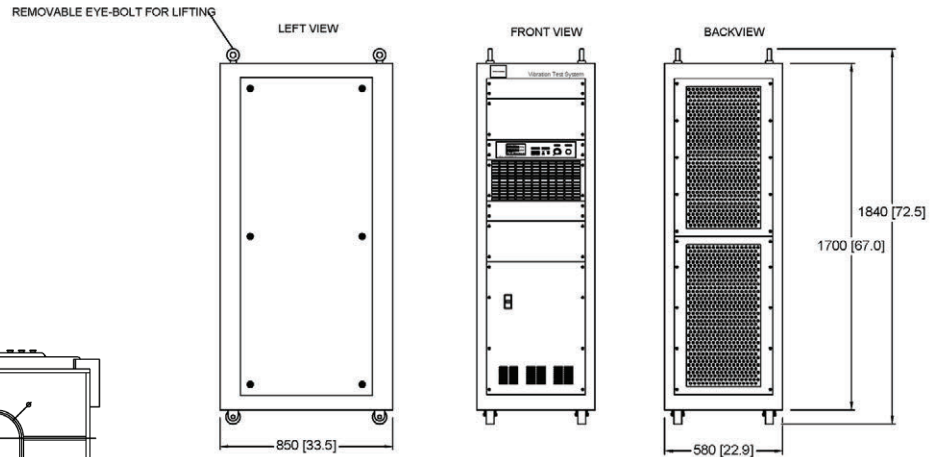
| BU-6 BLOWER                                  | METRIC             | IMPERIAL           |
|--|--------------------|--------------------|
| Standard Air Hose Length m (ft)              | 5                  | 16.4               |
| Hose Diameter mm (in)                        | 250                | 9.8                |
| Blower Unit Weight Uncrated kg (lb)          | 530                | 1168               |
| Dimensions with silencer (W x D x H) mm (in) | 1500 x 1300 x 2000 | 59.1 x 51.2 x 78.7 |



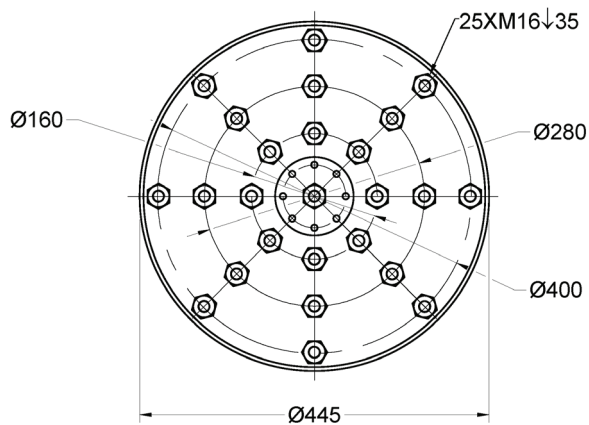
## SHAKER MODEL M6544A



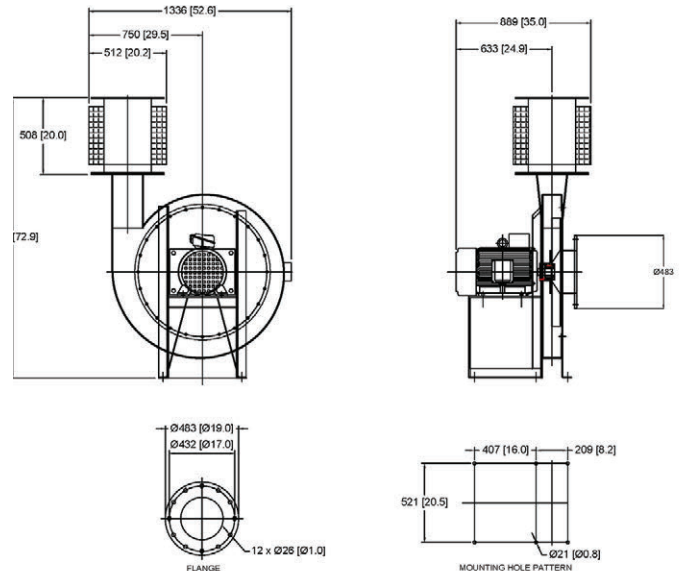
## POWER AMPLIFIER MODEL PA170



## ARMATURE INSERT PATTERN



## BLOWER UNIT MODEL BU-6



SENTEK DYNAMICS  
2370 OWEN STREET  
SANTA CLARA, CA 95054  
UNITED STATES OF AMERICA

PHONE: +1.408.200.3100 | FAX: +1.408.659.8229 | [WWW.SENTEKDYNAMICS.COM](http://WWW.SENTEKDYNAMICS.COM) | [SALES@SENTEKDYNAMICS.COM](mailto:SALES@SENTEKDYNAMICS.COM)

© 2017 Sentek Dynamics, All Rights Reserved. 07/2017

Notice: This document is for informational purposes only and does not set forth any warranty, expressed or implied, concerning any equipment, equipment feature, or service offered or to be offered by Sentek Dynamics. Sentek Dynamics reserves the right to make changes to this document at any time, without notice, and assumes no responsibility for its use. This informational document describes features that may not be currently available. Contact a Sentek Dynamics sales representative for information on features and product availability.