

M6044A-PA166 SYSTEM DATASHEET



SYSTEM PERFORMANCE	METRIC	IMPERIAL
Sine Force Peak kN (lbf)	58.80	13,218
Random Force rms kN (lbf)	58.80	13,218
Shock Force (6ms) kN (lbf)	117.60	26,437
Useful Frequency Range Hz	5 - 2500	5 - 2500
Continuous Displacement mm (in)	51/76*	2.0/3.0*
Shock Displacement mm (in)	51/76*	2.0/3.0*
Max Velocity m/s (in/s)	2	78.7
Max Acceleration Sine Peak m/s ² (g)	980	100

Air-cooled system ideally suited to test medium-sized electronic parts, flight and ground vehicle components and assemblies.

- Continuous displacement 51 mm (2.0 in) / 76 mm (3.0 in)*
- Useable frequency range 5 - 2500 Hz
- Max static payload 1000 kg (2205 lb)
- Air-cooled amplifier efficiency > 90%
- Rugged air-isolated trunnion

**With LSO Option*

M6044A SHAKER	METRIC	IMPERIAL
Armature Diameter mm (in)	445	17.5
Armature Material	Al	Al
Effective Armature Mass kg (lb)	49	108
Armature Insert Pattern PCD mm (in) plus 1 in center	8-160/8-280/8-400	8-6/8-11/8-16
Armature Insert Threads	M16	5/8-11UNC
First Resonant Frequency (bare table) ±5% Hz	2,250	2,250
Max Static Payload kg (lb)	1,000	2,205
Natural Frequency Thrust Axis Hz	< 5	< 5
Stray Flux Density gauss	< 10	< 10
Shaker Weight Uncrated kg (lb)	3,800	8,378
Dimensions Uncrated (W x D x H) mm (in)	1670 x 1050 x 1133	65.7 x 41.3 x 44.6

SLIP TABLES

Mono-base slip tables in a wide-range of sizes and configurations for maximum over-turning moment and cross-axial restraint

OPTIONS & ACCESSORIES

Sentek Dynamics offers a wide selection of options and accessories for unique applications and complete turn-key systems.

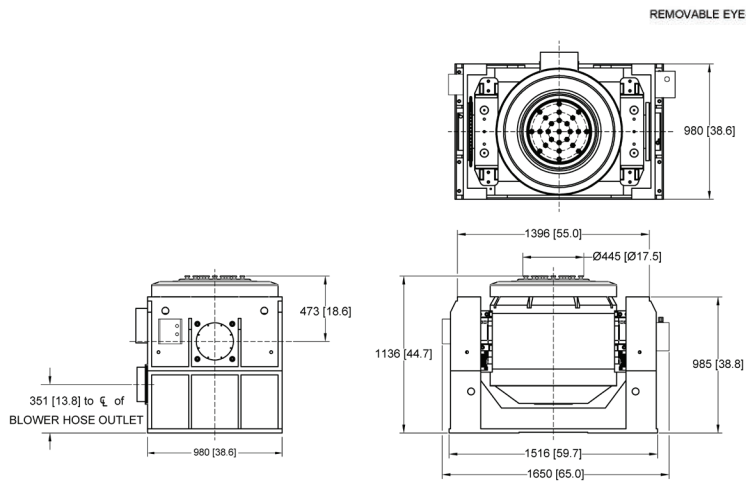
- Specify Metric or Imperial armature insert pattern & thread. Custom armature and slip table insert patterns and threads available.
- Air-isolation mounts eliminate need for seismic floor
- Thermal barrier for use with environmental test chambers
- Remote control panel for remote operation

PA166 POWER AMPLIFIER	METRIC	IMPERIAL
Number of Sub-modules Supplied	14	14
Rated Power Output kVA	66	66
Rated Output Voltage V rms	105	105
Rated Output Current A rms	620	620
Number of Cabinets	1	1
System Required Power kVA	85	85
Amplifier Weight Uncrated kg (lb)	680	1,499
Dimensions Uncrated (W x D x H) mm (in)	580 x 850 x 1840	22.8 x 33.5 x 72.4

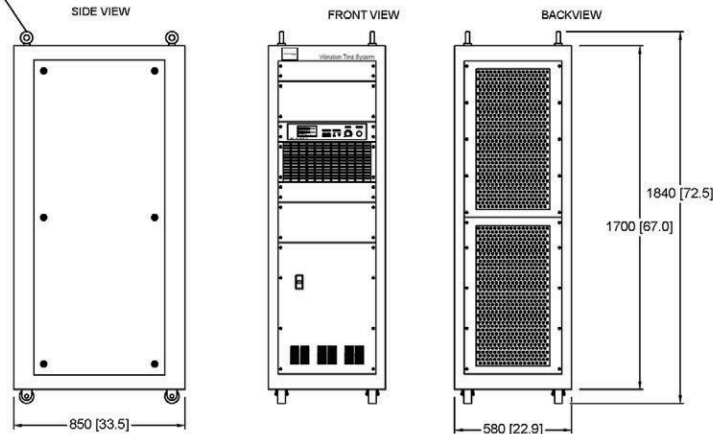
BU-5 BLOWER	METRIC	IMPERIAL
Standard Air Hose Length m (ft)	5	16.4
Hose Diameter mm (in)	250	9.8
Blower Unit Weight Uncrated kg (lb)	390	860
Dimensions with silencer (W x D x H) mm (in)	1350 x 1100 x 1960	53.1 x 43.3 x 77.2



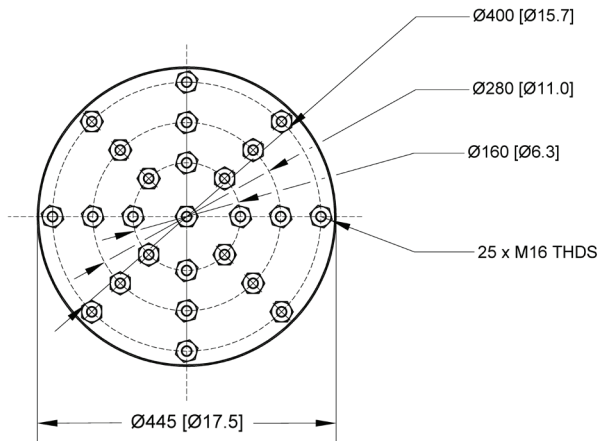
SHAKER MODEL M6044A



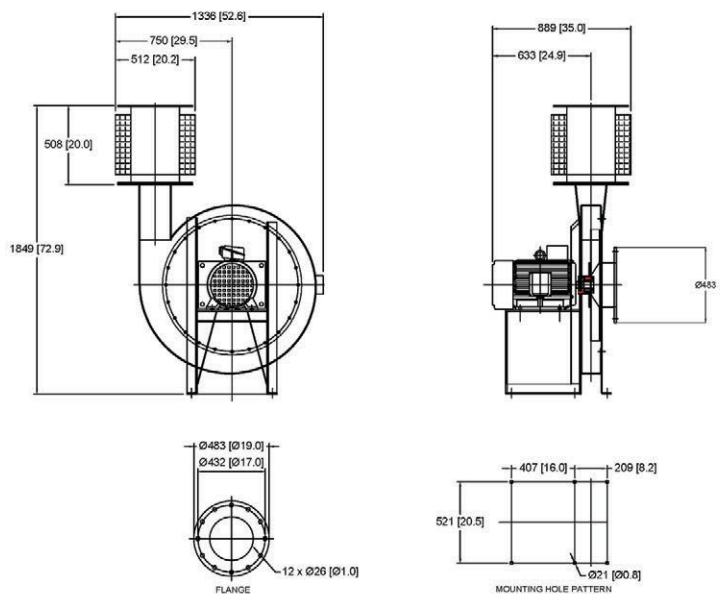
POWER AMPLIFIER MODEL PA166



ARMATURE INSERT PATTERN



BLOWER UNIT MODEL BU-5



SENTEK DYNAMICS
2370 OWEN STREET
SANTA CLARA, CA 95054
UNITED STATES OF AMERICA

PHONE: +1.408.200.3100 | FAX: +1.408.659.8229 | WWW.SENTEKDYNAMICS.COM | SALES@SENTEKDYNAMICS.COM

© 2017 Sentek Dynamics, All Rights Reserved. 06/2017

Notice: This document is for informational purposes only and does not set forth any warranty, expressed or implied, concerning any equipment, equipment feature, or service offered or to be offered by Sentek Dynamics. Sentek Dynamics reserves the right to make changes to this document at any time, without notice, and assumes no responsibility for its use. This informational document describes features that may not be currently available. Contact a Sentek Dynamics sales representative for information on features and product availability.