



M3264M-PA140 SYSTEM DATASHEET



SYSTEM PERFORMANCE	METRIC	IMPERIAL
Sine Force Peak kN (lbf)	31.36	7,050
Random Force rms kN (lbf)	21.90	4,923
Shock Force (6ms) kN (lbf)	62.72	14,100
Useful Frequency Range Hz	2 - 2000	2 - 2000
Continuous Displacement mm (in)	51	2.0
Shock Displacement mm (in)	51	2.0
Max Velocity m/s (in/s)	1.8	70.8
Max Acceleration Sine Peak m/s ² (g)	784	80

Air-cooled system ideally suited to test small to medium-sized electronic parts, connectors, hand-held units and small mechanical assemblies.

- Continuous displacement 51 mm (2.0 in)
- Useable frequency range 2 - 2000 Hz
- Max static payload 500 kg (1102 lb)
- Air-cooled amplifier efficiency > 90%
- Rugged isolated trunnion

M3264M SHAKER	METRIC	IMPERIAL
Armature Diameter mm (in)	640	25.2
Armature Material	Mg	Mg
Effective Armature Mass kg (lb)	40	88.2
Armature Insert Pattern PCD mm (in)	8-200/8-400/8-600	8-8/8-16/8-24
Armature Insert Threads	M10	3/8 - 16 UNC
First Resonant Frequency (bare table) ±5% Hz	2,100	2,100
Max Static Payload kg (lb)	500	1,102
Natural Frequency Thrust Axis Hz	< 5	< 5
Shaker Weight Uncrated kg (lb)	2,200	4,850

SLIP TABLES
Mono-base slip tables in a wide-range of sizes and configurations for maximum over-turning moment and cross-axial restraint

PA140 POWER AMPLIFIER	METRIC	IMPERIAL
Number of Sub-modules Supplied	7	7
Rated Power Output kVA	40	40
Rated Output Voltage V rms	95	95
Rated Output Current A rms	325	325
Number of Cabinets	1	1
System Required Power kVA	45	45
Amplifier Weight Uncrated kg (lb)	450	992
Dimensions Uncrated (W x D x H) mm (in)	550 x 1550 x 850	21.7 x 61.0 x 33.5

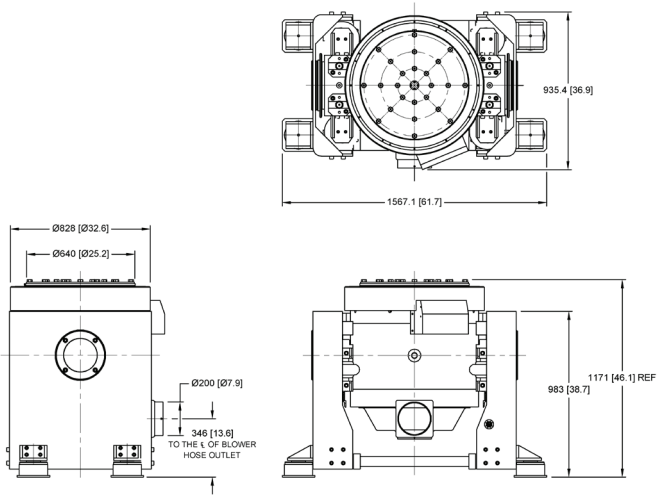
OPTIONS & ACCESSORIES
Sentek Dynamics offers a wide selection of options and accessories for unique applications and complete turn-key systems.

- Custom armature and slip table insert patterns and threads available
- Air-isolation feet, pads and mounts to eliminate need for seismic floor
- Thermal barrier for use with environmental test chambers
- Remote control panel for remote operation

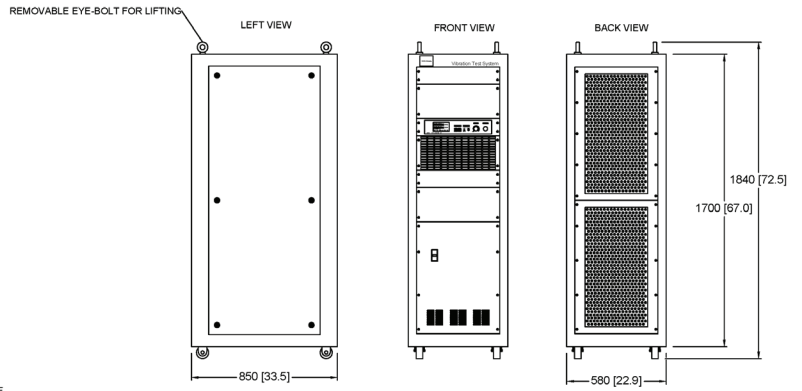
BU-3 BLOWER	METRIC	IMPERIAL
Standard Air Hose Length m (ft)	5	16.4
Hose Diameter mm (in)	200	7.9
Blower Unit Weight Uncrated kg (lb)	260	573
Dimensions (W x D x H) mm (in)	1000 x 1100 x 1900	39.4 x 43.3 x 74.8



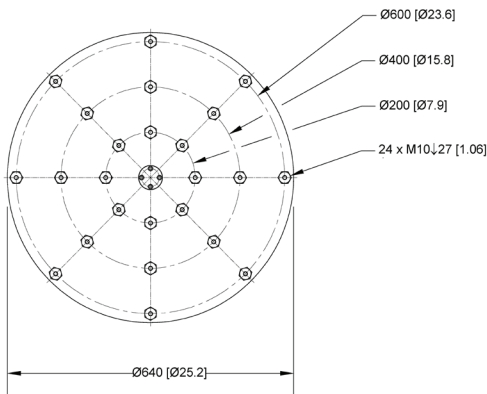
SHAKER MODEL M3264M



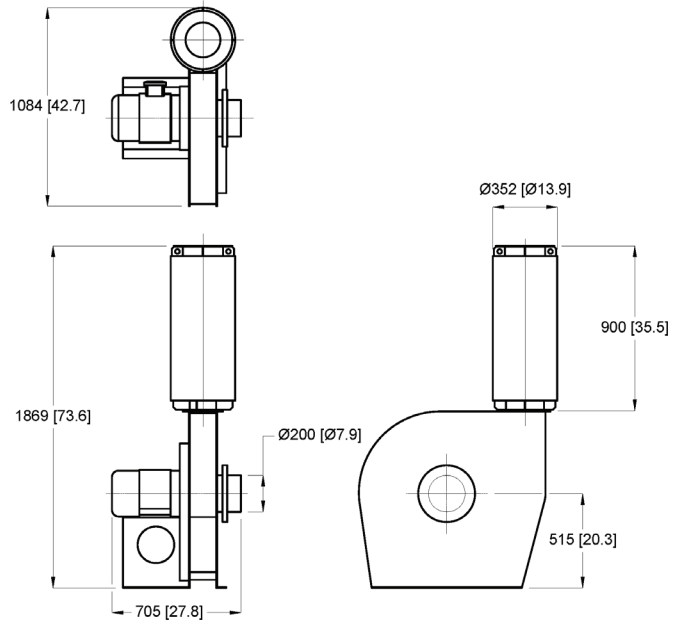
POWER AMPLIFIER MODEL PA140



ARMATURE INSERT PATTERN



BLOWER UNIT MODEL BU-3



SENTEK DYNAMICS
2370 OWEN STREET
SANTA CLARA, CA 95054
UNITED STATES OF AMERICA

PHONE: +1.408.200.3100 | FAX: +1.408.659.8229 | WWW.SENTEKDYNAMICS.COM | SALES@SENTEKDYNAMICS.COM

© 2017 Sentek Dynamics, All Rights Reserved. 04/2017

Notice: This document is for informational purposes only and does not set forth any warranty, expressed or implied, concerning any equipment, equipment feature, or service offered or to be offered by Sentek Dynamics. Sentek Dynamics reserves the right to make changes to this document at any time, without notice, and assumes no responsibility for its use. This informational document describes features that may not be currently available. Contact a Sentek Dynamics sales representative for information on features and product availability.

