



H16064A-PA4160 SYSTEM DATASHEET

SYSTEM PERFORMANCE	METRIC	IMPERIAL
Sine Force Peak kN (lbf)	156.8	35,250
Random Force rms kN (lbf)	156.8	35,250
Shock Force (6ms) kN (lbf)	313.6	70,500
Useful Frequency Range Hz	5 - 2200	5 - 2200
Continuous Displacement mm (in)	51/78*	2.0/3.0*
Shock Displacement mm (in)	51	2.0
Max Velocity m/s (in/s)	2.0	78.7
Max Acceleration Sine Peak m/s ² (g)	980	100

Water-cooled system ideally suited to testing large-sized electronic parts, connectors, handheld units and mechanical assemblies.

- Continuous displacement 51 mm (2.0 in)/78 mm (3.0)
- Useable frequency range 5 - 2200 Hz
- Max static payload 2000 kg (4409 lb)
- Air-cooled amplifier efficiency > 90%
- Rugged isolated trunnion

*LSO Option Available

H16064A SHAKER	METRIC	IMPERIAL
Armature Diameter mm (in)	640	25.2
Armature Material	Al	Al
Effective Armature Mass kg (lb)	160	353
Armature Insert Pattern PCD mm (in) plus 1 in center	8-160/8-280/8-600	8-6/8-11/8-24
Armature Insert Threads	M16	5/8-11 UNC
First Resonant Frequency (bare table) ±5% Hz	760	760
Max Static Payload kg (lb)	2,000	4,409
Natural Frequency Thrust Axis Hz	< 10	< 10
Shaker Weight Uncrated kg (lb)	9,000	19,842
Dimensions Uncrated (W x D x H) mm (in)	2250 x 1250 x 1330	88.6 x 49.2 x 52.4

SLIP TABLES

Mono-base slip tables in a wide-range of sizes and configurations for maximum over-turning moment and cross-axial restraint

OPTIONS & ACCESSORIES

Sentek Dynamics offers a wide selection of options and accessories for unique applications and complete turn-key systems.

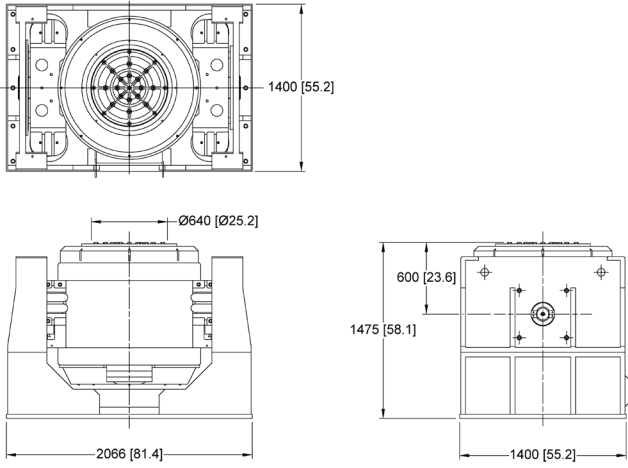
- Custom armature and slip table insert patterns and threads available
- Air-isolation feet, pads and mounts to eliminate need for seismic floor
- Thermal barrier for use with environmental test chambers
- Remote control panel for remote operation

PA4160 POWER AMPLIFIER	METRIC	IMPERIAL
Number of Sub-modules Supplied	36	36
Rated Power Output kVA	160	160
Rated Output Voltage V rms	100	100
Rated Output Current A rms	1,600	1,600
Number of Cabinets	4	4
System Required Power kVA	220	220
Amplifier Weight Uncrated kg (lb)	2,450	5,401
Dimensions Uncrated (W x D x H) mm (in)	2320 x 850 x 1800	91.3 x 33.5 x 70.9

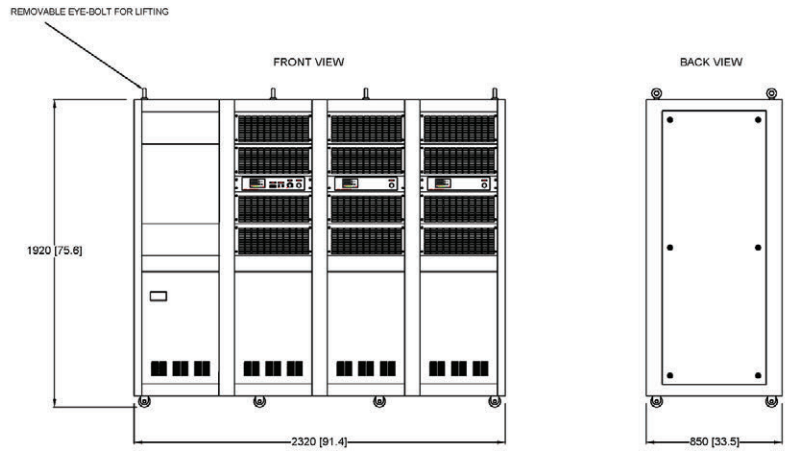
CU-4 WATER COOLING UNIT	METRIC	IMPERIAL
Power Requirement (3-Phase) kVA	6.6	6.6
Min Facility Cooling Water Flow (L/min) (gpm)	250	66.0
Max Facility Cooling Water Temp °C (°F)	25	77
Dimensions (W x D x H) mm (in)	1000 x 1000 x 1900	39.4 x 39.4 x 74.8
Cooling Unit Weight Uncrated kg (lb)	550	1,213



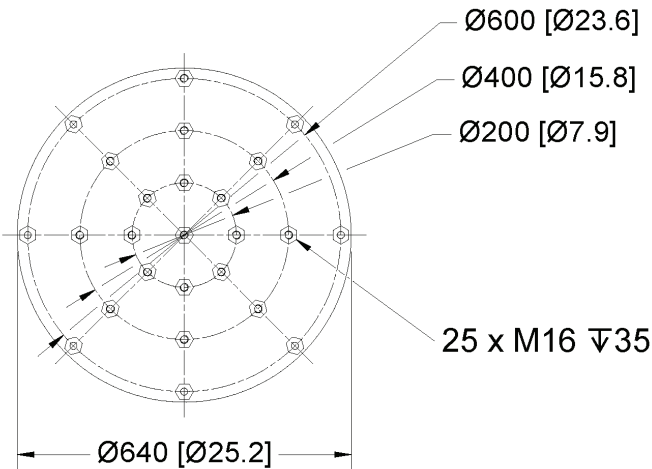
SHAKER MODEL H16064A



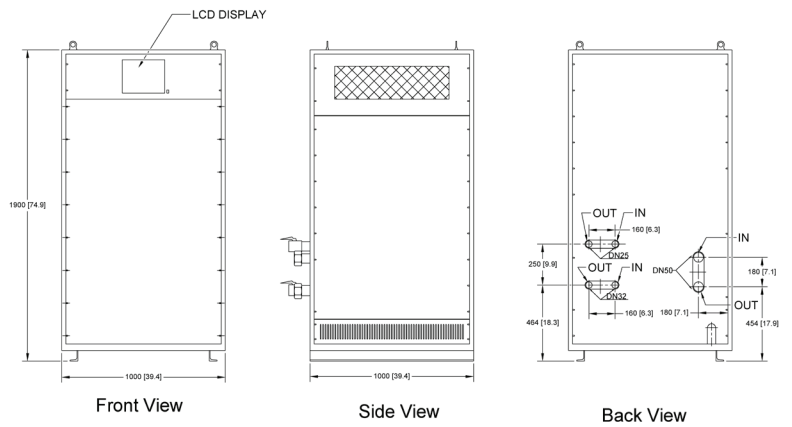
POWER AMPLIFIER MODEL PA4160



ARMATURE INSERT PATTERN



WATER COOLING UNIT CU-4



SENTEK DYNAMICS
 2370 OWEN STREET
 SANTA CLARA, CA 95054
 UNITED STATES OF AMERICA

PHONE: +1.408.200.3100 | FAX: +1.408.659.8229 | WWW.SENTEKDYNAMICS.COM | SALES@SENTEKDYNAMICS.COM

© 2017 Sentek Dynamics, All Rights Reserved. 06/2017

Notice: This document is for informational purposes only and does not set forth any warranty, expressed or implied, concerning any equipment, equipment feature, or service offered or to be offered by Sentek Dynamics. Sentek Dynamics reserves the right to make changes to this document at any time, without notice, and assumes no responsibility for its use. This informational document describes features that may not be currently available. Contact a Sentek Dynamics sales representative for information on features and product availability.

