

# E30076A-PA5300 SYSTEM DATASHEET

Water-cooled system ideally suited to test large-sized electronic parts, connectors, hand-held units and mechanical assemblies.

- Continuous displacement 51 mm (2.0 in)
- Useable frequency range 5 - 1,900 Hz
- Max static payload 3,200 kg (7,054 lb)
- Air-cooled amplifier efficiency > 90%
- Rugged isolated trunnion

SYSTEM PERFORMANCE	METRIC	IMPERIAL
Sine Force Peak kN (lbf)	294	66,094
Random Force rms kN (lbf)	205.8	46,266
Shock Force (6ms) kN (lbf)	588	132,188
Useful Frequency Range Hz	5-1,900	5-1,900
Continuous Displacement mm (in)	51	2.0
Shock Displacement mm (in)	51	2.0
Max Velocity m/s (in/s)	1.8	70.9
Max Acceleration Sine Peak m/s <sup>2</sup> (g)	980	100

E30076A SHAKER	METRIC	IMPERIAL
Armature Diameter mm (in)	760	29.9
Armature Material	Al	Al
Effective Armature Mass kg (lb)	230	507
Armature Insert Pattern PCD mm (in)	8-200/8-400/8-560/8-720	8-8/8-16/8-22/8-28
Armature Insert Threads	M16	5/8 - 11 UNC
First Resonant Frequency (bare table) ±5% Hz	1,680	1,680
Max Static Payload kg (lb)	3,200	7,054
Natural Frequency Thrust Axis Hz	< 10	< 10
Shaker Weight Uncrated kg (lb)	16,800	37,038
Dimensions Uncrated (W x D x H) mm (in)	2,400 x 1,700 x 1,500	94.5 x 66.9 x 59.1

## SLIP TABLES

Mono-base slip tables in a wide-range of sizes and configurations for maximum over-turning moment and cross-axial restraint

## OPTIONS & ACCESSORIES

Sentek Dynamics offers a wide selection of options and accessories for unique applications and complete turn-key systems.

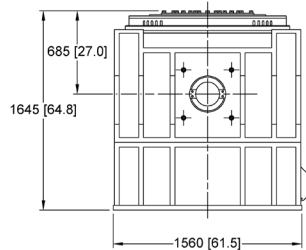
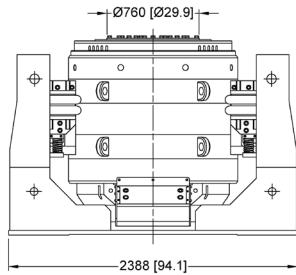
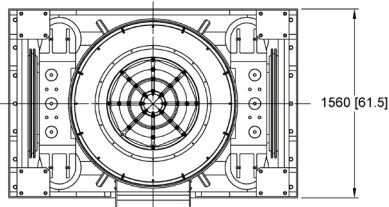
- Custom armature and slip table insert patterns and threads available
- Air-isolation feet, pads and mounts to eliminate need for seismic floor
- Thermal barrier for use with environmental test chambers
- Remote control panel for remote operation

PA5300 POWER AMPLIFIER	METRIC	IMPERIAL
Number of Sub-modules Supplied	68	68
Rated Power Output kVA	300	300
Rated Output Voltage V rms	100	100
Rated Output Current A rms	3,000	3,000
Number of Cabinets	5	5
System Required Power kVA	400	400
Amplifier Weight Uncrated kg (lb)	4,000	8,818
Dimensions Uncrated (W x D x H) mm (in)	3,480 x 850 x 1,800	137.0 x 33.5 x 70.9

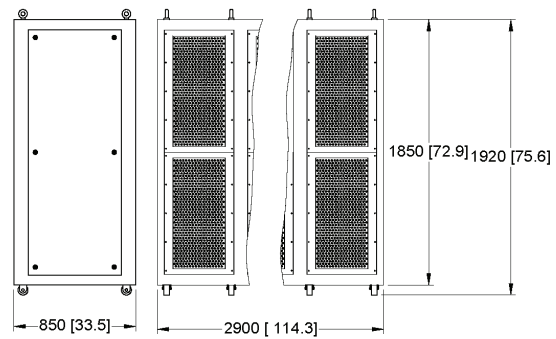
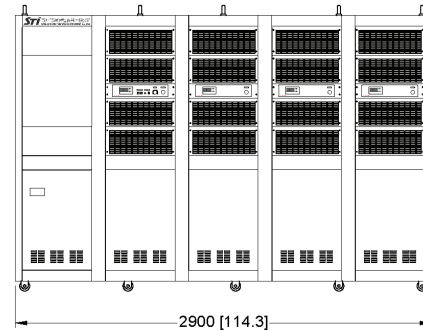
CU-6 WATER COOLING UNIT	METRIC	IMPERIAL
Power Requirement (3-phase) kVA	7.5	7.5
Min Facility Cooling Water (Flow L/Min) (gpm)	400	105.7
Max Facility Cooling Water Temp °C (°F)	25	77
Dimensions (W x D x H) mm (in)	1,000 x 1,000 x 1,900	39.4 x 39.4 x 74.8
Cooling Unit Weight Uncrated kg (lb)	650	1433



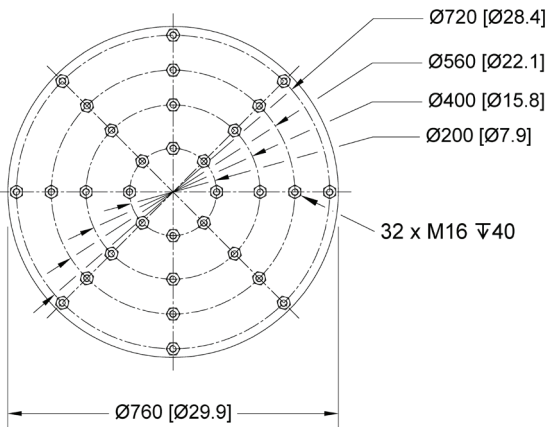
## SHAKER MODEL E30076A



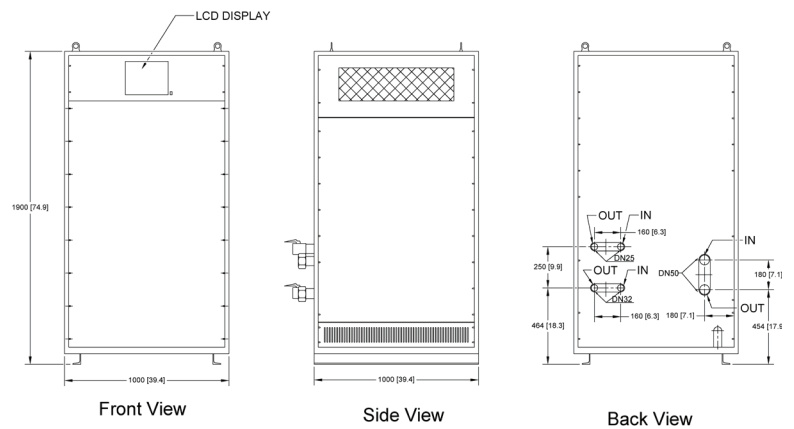
## POWER AMPLIFIER MODEL PA5300



## ARMATURE INSERT PATTERN



## WATER COOLING UNIT CU-6



SENTEK DYNAMICS  
2370 OWEN STREET  
SANTA CLARA, CA 95054  
UNITED STATES OF AMERICA

PHONE: +1.408.200.3100 | FAX: +1.408.659.8229 | [WWW.SENTEKDYNAMICS.COM](http://WWW.SENTEKDYNAMICS.COM) | [SALES@SENTEKDYNAMICS.COM](mailto:SALES@SENTEKDYNAMICS.COM)

© 2017 Sentek Dynamics, All Rights Reserved. 06/2017

Notice: This document is for informational purposes only and does not set forth any warranty, expressed or implied, concerning any equipment, equipment feature, or service offered or to be offered by Sentek Dynamics. Sentek Dynamics reserves the right to make changes to this document at any time, without notice, and assumes no responsibility for its use. This informational document describes features that may not be currently available. Contact a Sentek Dynamics sales representative for information on features and product availability.