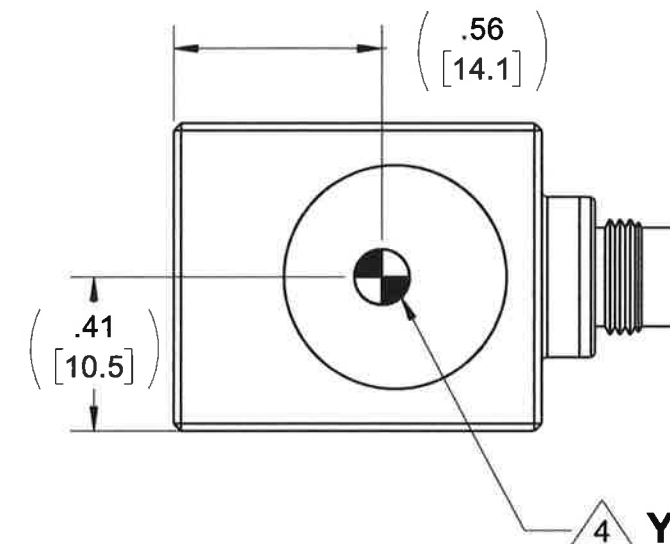
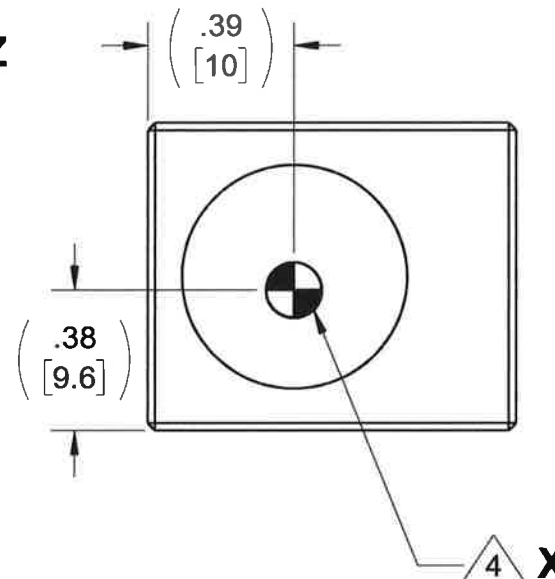
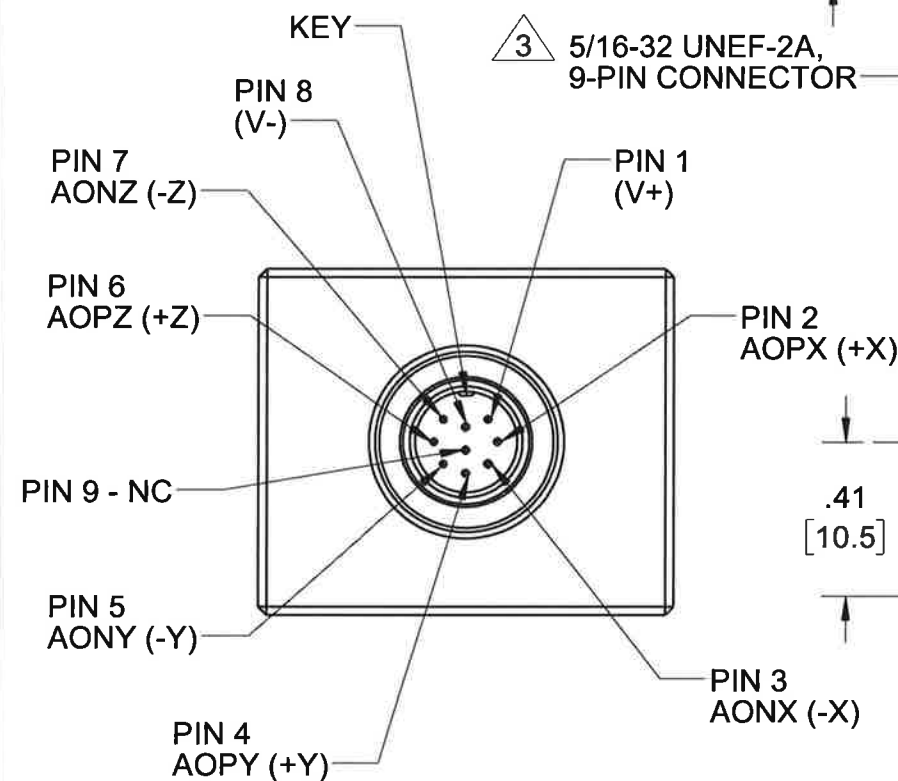
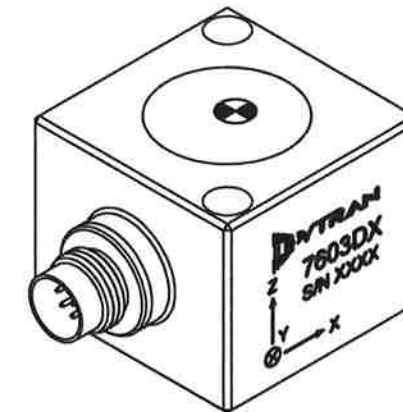
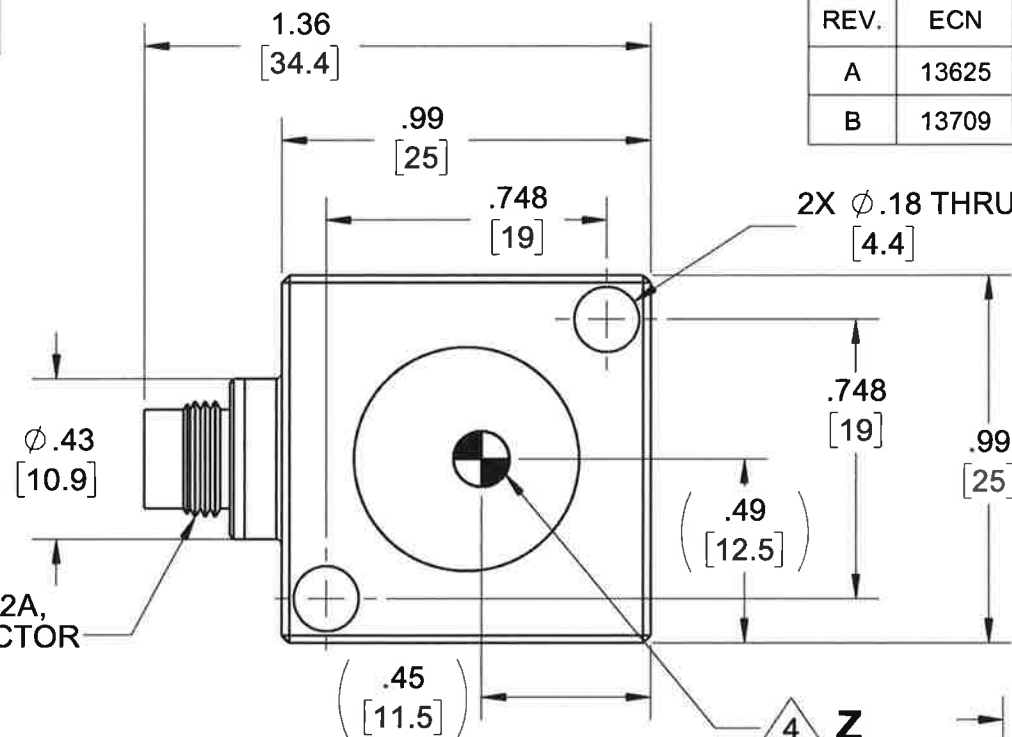


PROPRIETARY AND CONFIDENTIAL

THE INFORMATION CONTAINED IN THIS DRAWING IS THE SOLE PROPERTY OF
DYTRAN INSTRUMENTS INC. ANY REPRODUCTION IN PART OR AS A WHOLE
WITHOUT THE WRITTEN PERMISSION OF DYTRAN INSTRUMENTS INC. IS PROHIBITED

MODEL	INPUT RANGE
7603D1	±2g
7603D2	±5g
7603D3	±10g
7603D4	±25g
7603D5	±50g
7603D6	±100g
7603D7	±200g
7603D8	±400g

REVISIONS					
REV.	ECN	DESCRIPTION	BY/DATE	CHK	APPR
A	13625	INITIAL RELEASE. REVISED PIN OUT.	NDC 08/03/17	LN	AS
B	13709	69034A16 WAS: 6753A1	RA, 09/07/17	MJ	LW



5. MINOR VOIDS, SCARS, SCRATCHES AND MOUNTING BLEMISH/WITNESS MARKS ON EXTERIOR SURFACES ARE ALLOWED DUE TO RESTRAINING AND HANDLING DURING TESTING, TRANSPORT OR PROCESSING. THESE APPEAR AS INDICATORS THAT DO NOT AFFECT FORM, FIT OR FUNCTION AS INTENDED BY DESIGN OR APPLICATION

4 MARKING DENOTES LOCATION OF SENSING ELEMENT'S CENTER OF MASS

3 MATES WITH DYTRAN 6964AXX CABLE (XX DENOTES LENGTH IN FT)

2. WEIGHT: 38 GRAMS, MAX.
1. MATERIAL: TITANIUM ALLOY.

NOTES: UNLESS OTHERWISE SPECIFIED

UNLESS OTHERWISE SPECIFIED:
INTERPRET DIM & TOL PER
ASME Y14.5M - 1994.
REMOVE BURRS.
COUNTERSINK INTERNAL THDS
90° TO MAJOR DIA.
CHAM EXT THDS 45° TO MINOR DIA.
THD LENGTHS AND DEPTHS ARE FOR
MIN FULL THDS.
DIMENSIONS APPLY AFTER FINISHING.

ALL MACHINED SURFACES.
TOTAL RUNOUT WITHIN .005.
BREAK SHARP EDGES .005 TO .010.
MACHINED FILLET RADII .005 TO .015.
WELDING SYMBOLS PER AWS A2.4.
ABBREVIATIONS PER MIL-STD-12.

UNLESS OTHERWISE SPECIFIED:
DIMENSIONS ARE IN INCHES.
DIMENSIONS IN BRACKETS [] ARE IN
MILLIMETERS. TOLERANCES ARE:

DECIMALS METRIC ANGLES
.XX ±.03 .X ±.8
.XXX ±.010 .XX ±0.25 ±1°

APPROVALS		DATE
ORIG	NDC	08/03/17
CHK	LN	08/16/17
APP	AS	08/16/17

DO NOT SCALE DRAWING



DYTRAN
INSTRUMENTS, INC.
Chatsworth, CA

TITLE: OUTLINE/INSTALLATION DWG,
TRIAxIAL DC ACCELEROMETER,
7603D SERIES

SIZE	CAGE CODE	DWG NO	REV
B	2W033	127-7603D	B

SCALE: 1:1 SHEET 1 OF 2

4

3

DWG NO

127-7603D

SH 2

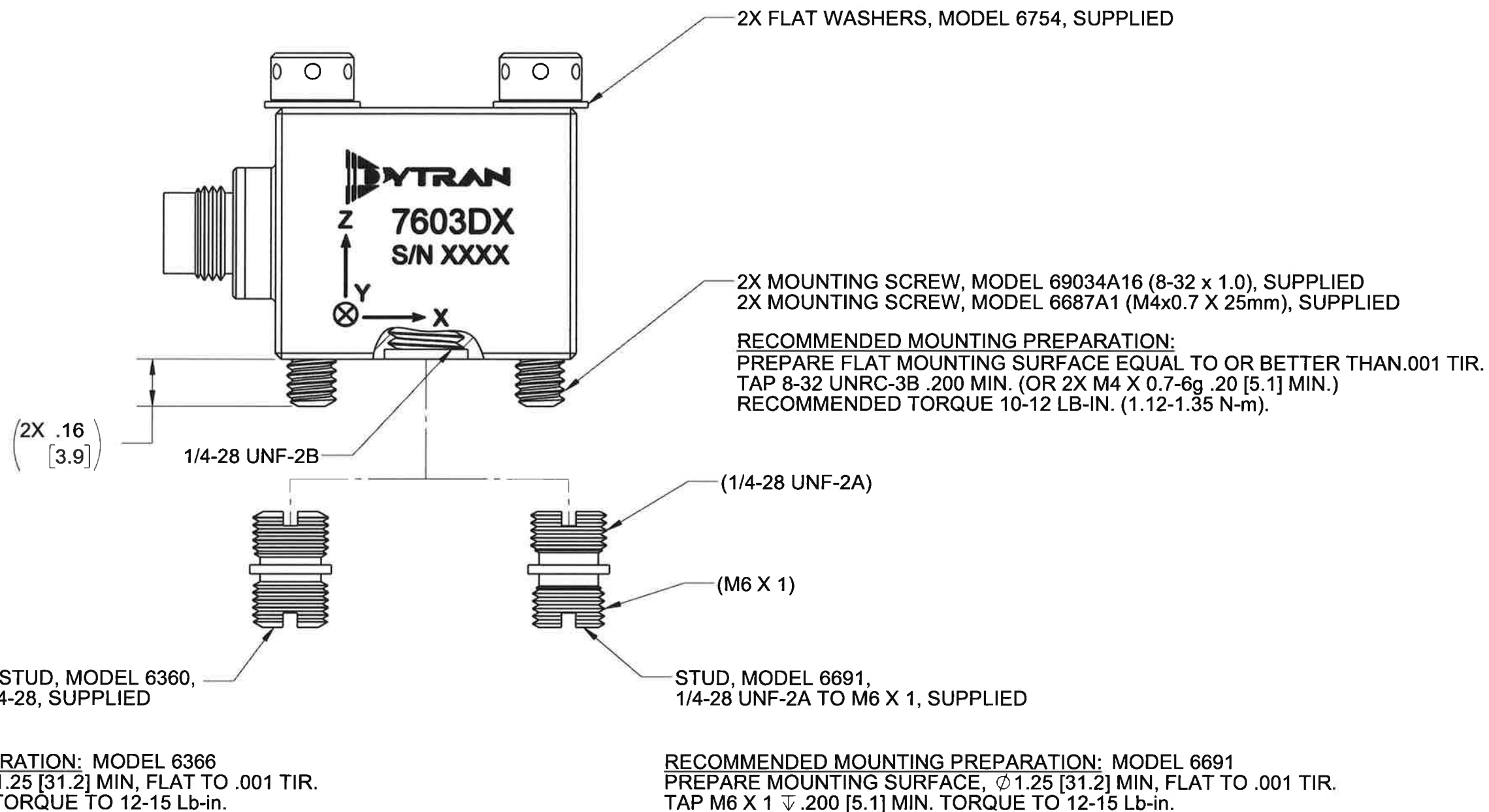
REV B

2

1

PROPRIETARY AND CONFIDENTIAL

THE INFORMATION CONTAINED IN THIS DRAWING IS THE SOLE PROPERTY OF
DYTRAN INSTRUMENTS INC. ANY REPRODUCTION IN PART OR AS A WHOLE
WITHOUT THE WRITTEN PERMISSION OF DYTRAN INSTRUMENTS INC. IS PROHIBITED



RECOMMENDED MOUNTING PREPARATION: MODEL 6366
PREPARE MOUNTING SURFACE, $\phi 1.25$ [31.2] MIN, FLAT TO .001 TIR.
TAP 1/4-28 UNF-2B ∇ .200 [5.1] MIN. TORQUE TO 12-15 Lb-in.

RECOMMENDED MOUNTING PREPARATION: MODEL 6691
PREPARE MOUNTING SURFACE, $\phi 1.25$ [31.2] MIN, FLAT TO .001 TIR.
TAP M6 X 1 ∇ .200 [5.1] MIN. TORQUE TO 12-15 Lb-in.



TITLE: OUTLINE/INSTALLATION DWG,
TRIAxIAL DC ACCELEROMETER,
7603D SERIES

SIZE	CAGE CODE	DWG NO	REV
B	2W033	127-7603D	B


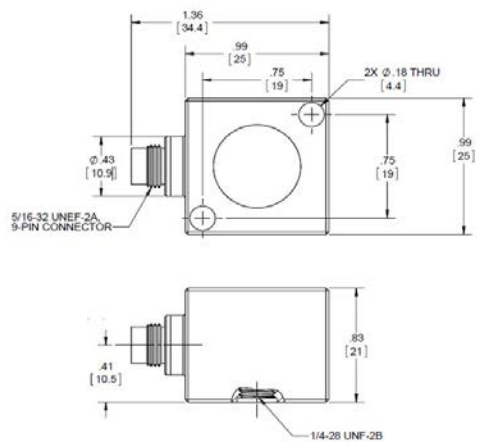
SCALE: 2:1 SHEET 2 OF 2


4

3

2

1

Model Number 7603D1		PERFORMANCE SPECIFICATION				DOC NO PS7603D1	
		TRIAXIAL VARIABLE CAPACITANCE ACCELEROMETER				REV E, ECN 14848, 02/05/19	
		<ul style="list-style-type: none">• VARIABLE CAPACITANCE TECHNOLOGY• DIFFERENTIAL MODE• HERMETICALLY SEALED• DC RESPONSE					
		ENGLISH		SI			
		1.3		oz	38		grams
		9-pin, 5/16-32 UNEF-2A		9-pin, 5/16-32 UNEF-2A			
		Titanium Alloy		Titanium Alloy			
		MEMS		MEMS			
		PHYSICAL					
		Weight, Max					
		Connector					
		Material					
Sensing Technology							
Type							
PERFORMANCE							
Input Range		±2		g	±19.6		m/s ²
Frequency Response (±5%)		0 - 200		Hz	0 - 200		Hz
Frequency Response (±3dB)		0 - 400		Hz	0 - 400		Hz
Resonant Frequency		>3000		Hz	>3000		Hz
Sensitivity Differential, ±5% [1]		250		mV/g	25		mV/m/s ²
Output Noise, Differential, Typ		7		μ g rms/√ Hz	69		μ m/s ² /√ Hz
Non-Linearity, Max [2]		0.5		% F.S	0.5		% F.S
Cross Axis Sensitivity, Max		3		%	3		%
ENVIRONMENTAL							
Maximum Mechanical Shock (0.1 ms)		±2000		gpk	±19620		m/s ² peak
Bias Temperature Shift, Max [3]		111		(ppm of span)/°F	200		(ppm of span)/°C
Bias Calibration Error, Max		0.5		% of span	0.5		% of span
Operating Temperature Range		-67 to +257		°F	-55 to +125		°C
Seal		Hermetic			Hermetic		
ELECTRICAL							
Output Common Mode Voltage, ± VDC		[4]			[4]		
Output Impedance, Nom		1225		Ω	1225		Ω
Operating Voltage [6]		±3 to ±11		VDC	±3 to ±11		VDC
Operating Current (AOP &AON open), Max		35		mA Dc	35		mA Dc
Power Supply Rejection Ratio		>65		dB	>65		dB
		This family also includes:					
		Model	Input Range (g)	Frequency Response, ±3dB (Hz)	Sensitivity Differential, ±5% (mV/g)	Max.Shock (0.1ms)	Noise Differential (μg/√Hz)
		7603D2	±5	0-500	100	2000	12
		7603D3	±10	0-1000	50	5000	18
		7603D4	±25	0-1400	20	5000	25
		7603D5	±50	0-2000	10	5000	50
		7603D6	±100	0-2500	5	5000	100
		7603D7	±200	0-3000	2.5	5000	200
		7603D8	±400	0-4000	1.25	5000	400
		Refer to the performance specifications of the products in this family for detailed description.					
		Supplied Accessories:					
		1) Accredited calibration certificate (ISO 17025)					
		2) Mounting stud, Model 6360, 1/4-28 UNF-2A, Qty 1					
		3) Mounting stud, Model 6691, 1/4-28 UNF-2A to M6 X 1, Qty 1					
		4) Mounting screws, Model 69034A16, 8-32 x 1.0, Qty. 2					
		5) Mounting screws, Model 6687A1, M4x0.7 x 25mm, Qty. 2					
		6) Flat washers, Model 6754, Qty. 2					
		Notes:					
		[1] Single ended sensitivity is half of values shown. (Ref. at 100 Hz)					
		[2] -90% to +90% of Full Scale.					
		[3] Over the rated temperature range.					
		[4] Bias voltage equal to (+v - (-v)) / 2					
		[5] In the interest of constant product improvement, we reserve the right to change specifications without notice.					
		[6] +6.0 to +22.0 VDC in single supply operation with V- grounded.					
							
		Units on the line drawing are in inches. Refer to 127-7603D for more information.					



21592 Marilla Street, Chatsworth, California 91311 Phone: 818.700.7818 Fax:818.700.7880 www.dytran.com
For permission to reprint this content, please contact info@dytran.com



21592 Marilla Street, Chatsworth, California 91311 Phone: 818.700.7818 Fax: 818.700.7880 www.dytran.com
 For permission to reprint this content, please contact info@dytran.com