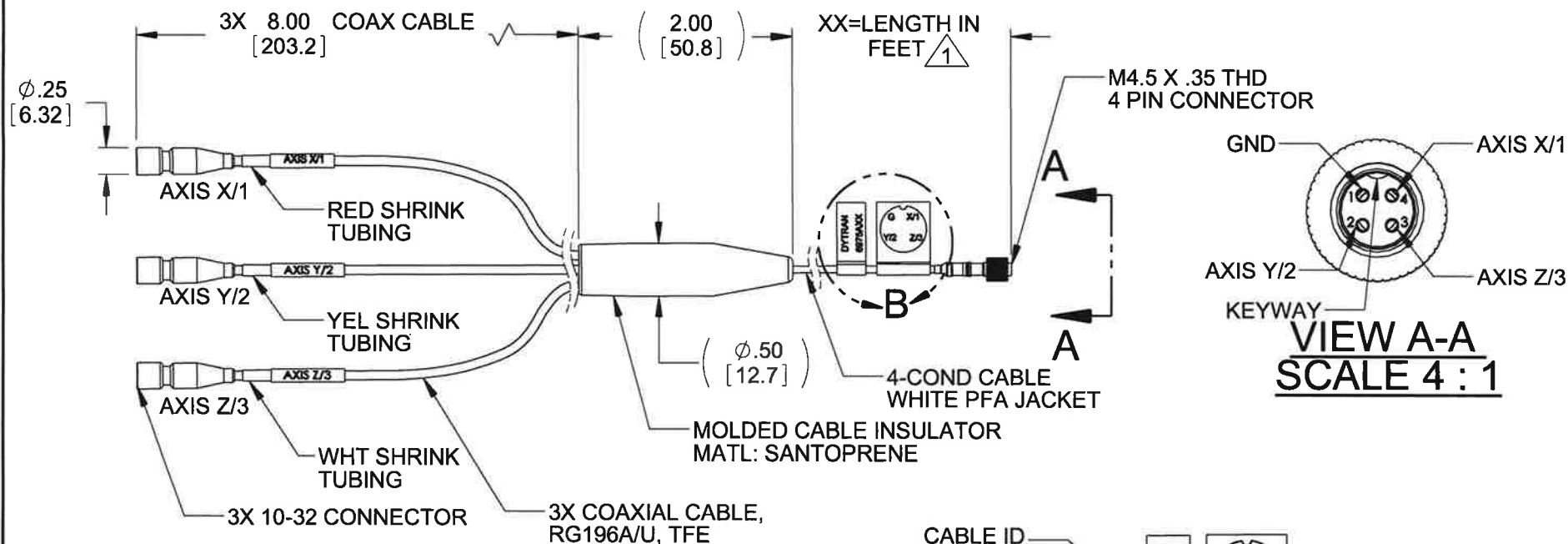
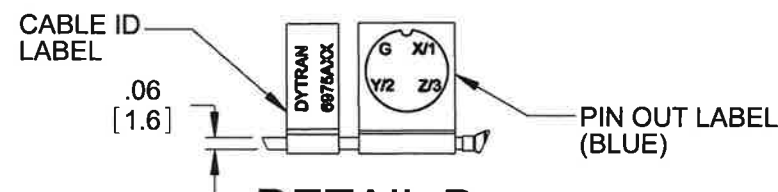


PROPRIETARY AND CONFIDENTIAL		REVISIONS				
THE INFORMATION CONTAINED IN THIS DRAWING IS THE SOLE PROPERTY OF DYTRAN INSTRUMENTS INC. ANY REPRODUCTION IN PART OR AS A WHOLE WITHOUT THE WRITTEN PERMISSION OF DYTRAN INSTRUMENTS INC. IS PROHIBITED		REV.	ECN	DESCRIPTION	BY/DATE	CHK
		A	7508	INITIAL RELEASE	JS 05/12/11	<i>D</i>



VIEW A-A
SCALE 4 : 1



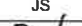



DETAIL B
SCALE 1 : 1

2. TEMPERATURE RATING: -55 °C TO 120 °C.

1 PART NUMBER 6975AAX, "XX" DENOTES LENGTH IN FEET.

NOTES: UNLESS OTHERWISE SPECIFIED.

		UNLESS OTHERWISE SPECIFIED: INTERPRET DIM & TOL PER ASME Y14.5M - 1994. REMOVE BURRS. COUNTERSINK INTERNAL THDS 90° TO MAJOR DIA. CHAM EXT THDS 45° TO MINOR DIA. THD LENGTHS AND DEPTHS ARE FOR MIN FULL THDS. THDS PER MIL-S-7742. DIMENSIONS APPLY AFTER FINISHING.		UNLESS OTHERWISE SPECIFIED: DIMENSIONS ARE IN INCHES. DIMENSIONS IN BRACKETS [] ARE IN MILLIMETERS TOLERANCES ARE: INCHES METRIC ANGLES .XX ± .03 .X ± 0.8 ± 1° .XXX ± .010 .XX ± 0.25		DYTRAN INSTRUMENTS, INC.		MASTER ONLY IN RED	
USED ON	NEXT ASSY	APPLICATION		MATERIAL		APPROVALS		TITLE:	
THIRD ANGLE PROJECTION		FINISH		DO NOT SCALE DRAWING		DATE		OUTLINE/INSTALLATION DRAWING, 6975A	
		ALL MACHINED SURFACES.  TOTAL RUNOUT WITHIN .005. BREAK SHARP EDGES .005 TO .010. MACHINED FILLET RADII .005 TO .015. WELDING SYMBOLS PER AWS A2.4. ABBREVIATIONS PER MIL-STD-12.				ORIG JS 04/26/11		SIZE CAGE CODE DWG. NO.	
						CHK  10/7/15		A 2W033 127-6975A	
						APP  10/7/15		REV	
						APP		A	
								SCALE: NONE SOLIDWORKS SHEET 1 OF 1	