

PROPRIETARY AND CONFIDENTIAL

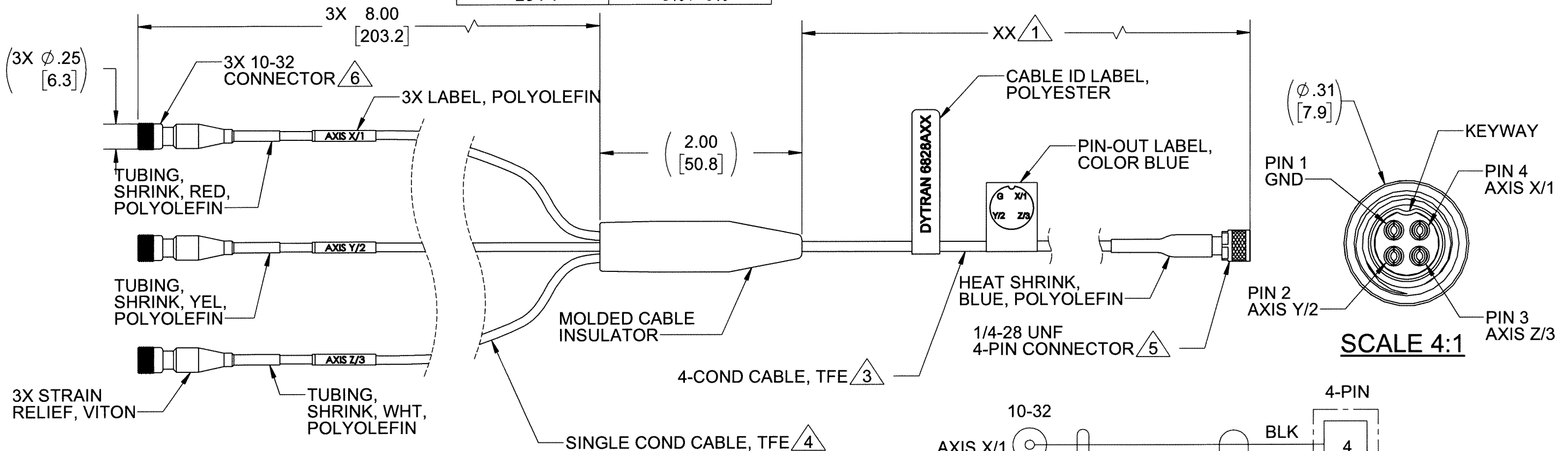
THE INFORMATION CONTAINED IN THIS DRAWING IS THE SOLE PROPERTY OF DYTRAN INSTRUMENTS INC. ANY REPRODUCTION IN PART OR AS A WHOLE WITHOUT THE WRITTEN PERMISSION OF DYTRAN INSTRUMENTS INC. IS PROHIBITED

1 CABLE LENGTH TOLERANCE

≤1FT	+1/ -0 IN
>1 FT - 5 FT	+2/ -0 IN
> 5 FT - 10 FT	+4/ -0 IN
>10 FT - 25FT	+6 / -0 IN
>25 FT	+5% / -0%

REVISIONS

REV.	ECN	DESCRIPTION	BY/DATE	CHK	APPR
E	9717	SEE ECN	AB 03/08/13	JS	DV
F	14536	SEE ECN	DP 09/24/18	KG	LN

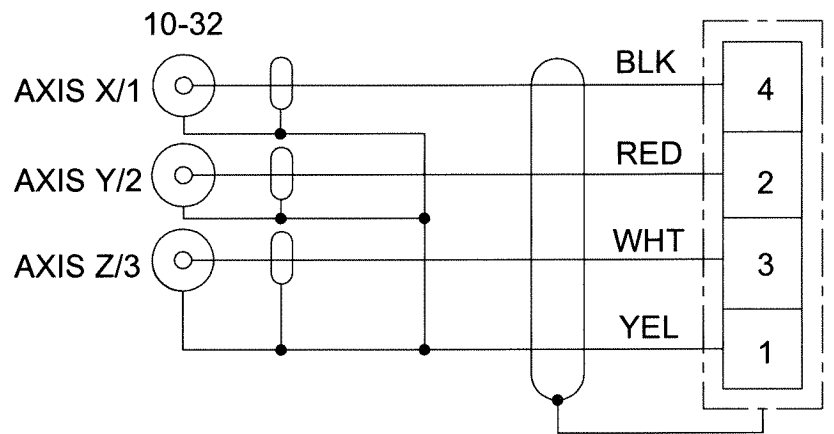


6 MATERIAL:  
 BODY, BUSHING, CAP, COUPLING NUT: STAINLESS STEEL PASSIVATED  
 CONTACT, REAR BODY, CRIMP SLEEVE: BRASS, GOLD  
 INSULATORS: TEFLON  
 O-RING: VITON

5 MATERIAL:  
 SHELL/THUMB NUT: BRASS C360, GOLD PLATED  
 PLUG INSERT: TEFLON  
 SOCKETS: BERYLLIUM COPPER, GOLD PLATED  
 CRIMP SLEEVE: BRASS C360, GOLD PLATED

4 SEE SHEET 2 FOR CABLE SPECIFICATION TABLE.  
 3 SEE SHEET 2 FOR CABLE SPECIFICATION TABLE.  
 2. OPERATING RANGE: -67°F (-55°C) TO 230°F (110°C)  
 1 MODEL NO. 6828AXX ("XX" EQUALS LENGTH IN FEET. SEE TABLE FOR TOLERANCE).

NOTES: UNLESS OTHERWISE SPECIFIED



SCHEMATIC DIAGRAM

UNLESS OTHERWISE SPECIFIED:  
 INTERPRET DIM & TOL PER ASME Y14.5M - 1994. REMOVE BURRS. COUNTERSINK INTERNAL THDS 90° TO MAJOR DIA. CHAM EXT THDS 45° TO MINOR DIA. THD LENGTHS AND DEPTHS ARE FOR MIN FULL THDS. DIMENSIONS APPLY AFTER FINISHING.

UNLESS OTHERWISE SPECIFIED: DIMENSIONS ARE IN INCHES. DIMENSIONS IN BRACKETS [ ] ARE IN MILLIMETERS TOLERANCES ARE:

DECIMALS	METRIC	ANGLES
.XX ±.03	.X ± 0.8	±1°
.XXX ±.010	.XX ±0.25	

APPROVALS: ORG RA 04/06/04, CHK NC 04/06/04, APP CES 04/06/04

DO NOT SCALE DRAWING

THIRD ANGLE PROJECTION

63/

ALL MACHINED SURFACES: TOTAL RUNOUT WITHIN .005. BREAK SHARP EDGES .005 TO .010. MACHINED FILLET RADII .005 TO .015. WELDING SYMBOLS PER AWS A2.4. ABBREVIATIONS PER MIL-STD-12.

**DYTRAN INSTRUMENTS, INC.** Chatsworth, CA

MASTER ONLY IF IN RED

TITLE: OUTLINE/INSTALLATION DWG, MINI 4-PIN TO (3) 10-32, MODEL 6828A

SIZE B	CAGE CODE 2W033	DWG NO 127-6828A	REV F
--------	-----------------	------------------	-------

SCALE: 1:1 SHEET 1 OF 2

4

3

2

DWG NO. 127-6828A SH 2 REV F

1

**PROPRIETARY AND CONFIDENTIAL**

THE INFORMATION CONTAINED IN THIS DRAWING IS THE SOLE PROPERTY OF DYTRAN INSTRUMENTS INC. ANY REPRODUCTION IN PART OR AS A WHOLE WITHOUT THE WRITTEN PERMISSION OF DYTRAN INSTRUMENTS INC. IS PROHIBITED

**△3 4 CONDUCTOR, SHIELDED CABLE**

**145-0008 △4 SINGLE CONDUCTOR SHIELDED CABLE**

CONDUCTORS	30 AWG 7/38 SILVER PLATED COPPER
WIRE TYPE	PFA INSULATION OD .024" ±.002"
SHIELD	SILVER PLATED COPPER BRAID, 90% MIN COVERAGE
JACKET	FEP, BLACK, .006/.015 WALL
DIAMETER	.095 MIN/ .105 MAX
TEMP	-65 °C (-85 °F) TO +200 °C (+392 °F)
VOLTAGE	250 VOLTS

WIRE	30-7/38 SILVER PLATED COPPER
WIRE INSULATION	EXTRUDED PTFE, NATURAL, Ø.033 ±.002
SHIELD	38 AWG SILVER PLATED COPPER BRAID, 95% MIN COVERAGE, Ø.054 NOM
JACKET	WHT PTFE WRAP .005-.010 WALL
DIAMETER	Ø.074±.006
TEMP	200 DEG C WIRE RATED
VOLTAGE	2000 VAC
INDUCTANCE	.80 microH/FT
MINIMUM BEND RADIUS	.38 IN
CAPACITANCE (SHIELD TO CONDUCTOR)	32 pF/FT
IMPEDANCE	50 OHMS

B

B

B


B

A

A

A

A

				<b>MASTER ONLY IF IN RED</b>	
TITLE: <b>OUTLINE/INSTALLATION DWG, MINI 4-PIN TO (3) 10-32, MODEL 6828A</b>					
SIZE	CAGE CODE	DWG NO			REV
<b>B</b>	<b>2W033</b>	<b>127-6828A</b>			<b>F</b>
SCALE: 1:1		PART NO: 6828A		SHEET 2 OF 2	

4

3

2

1