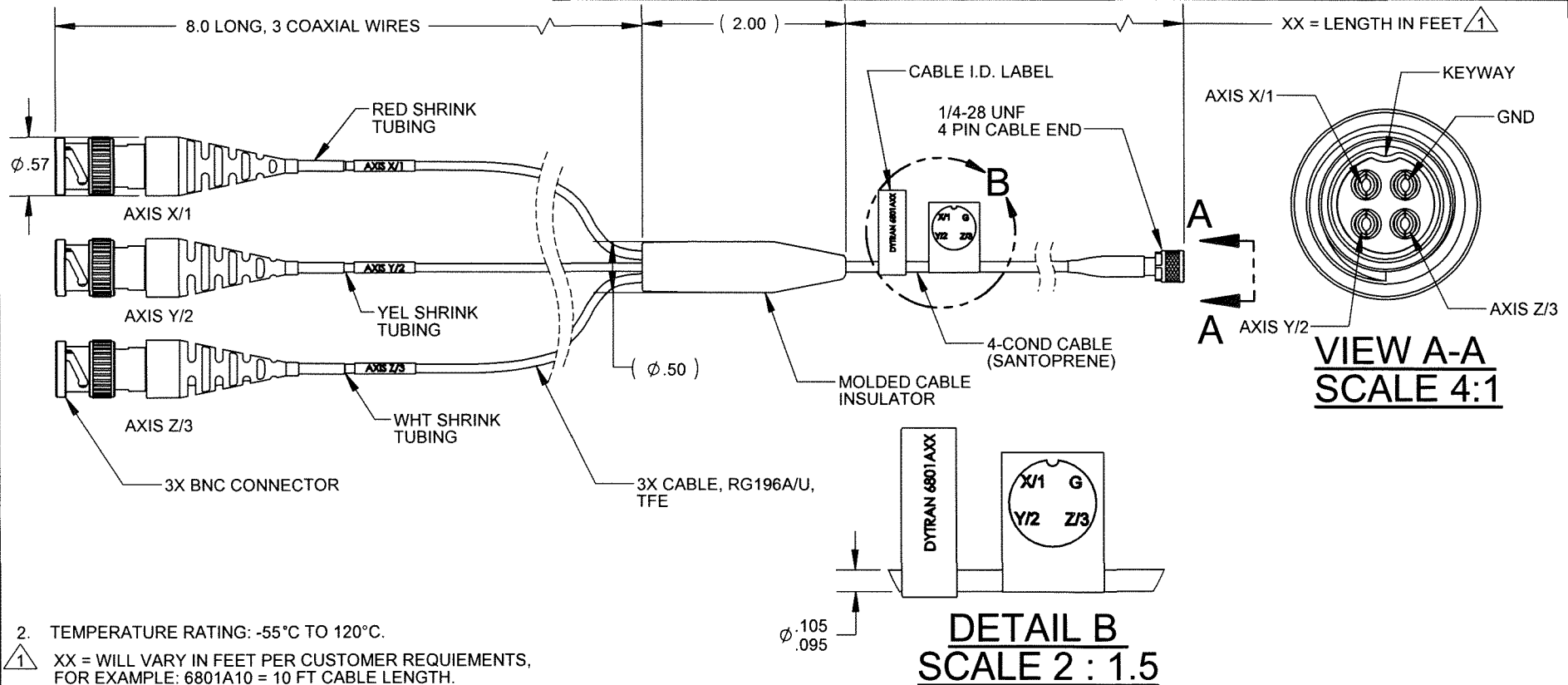


PROPRIETARY AND CONFIDENTIAL

THE INFORMATION CONTAINED IN THIS DRAWING IS THE SOLE PROPERTY OF DYTRAN INSTRUMENTS INC. ANY REPRODUCTION IN PART OR AS A WHOLE WITHOUT THE WRITTEN PERMISSION OF DYTRAN INSTRUMENTS, INC. IS PROHIBITED

REVISIONS

REV.	ECN	DESCRIPTION	BY/DATE	CHK	APPR
D	8604	4 PIN CONNECTOR IS: 120-0292-01 WAS: 120-0010-01	RA 05/17/12	JS	DV
E	14565	UPDATED CONNECTOR VIEW	DP 10/08/18	<i>DP</i>	<i>W</i>



NOTES: UNLESS OTHERWISE SPECIFIED.

CONTRACT NO.



MASTER
ONLY IF IN RED
Chatsworth, CA

TITLE:
**OUTLINE/INSTALLATION DRAWING,
MINI 4 PIN TO (3) BNC, MODEL 6801A**

SIZE A	CAGE CODE 2W033	DWG. NO. 127-6801A	REV E
SCALE: NONE		SOLIDWORKS	SHEET 1 OF 1

APPROVALS		DATE
ORIG	D.Z.	08/30/95
CHK	DV	09/30/08
APP	DV	09/30/09
DO NOT SCALE DRAWING		

UNLESS OTHERWISE SPECIFIED:
INTERPRET DIM & TOL PER
ASME Y14.5M - 1994.
REMOVE BURRS.
COUNTERSINK INTERNAL THDS
90° TO MAJOR DIA.
CHAM EXT THDS 45° TO MINOR DIA.
THD LENGTHS AND DEPTHS ARE FOR
MIN FULL THDS.
THDS PER MIL-S-7742.
DIMENSIONS APPLY AFTER FINISHING.
ALL MACHINED SURFACES.
TOTAL RUNOUT WITHIN .005.
BREAK SHARP EDGES .005 TO .010.
MACHINED FILLET RADII .005 TO .015.
WELDING SYMBOLS PER AWS A2.4.
ABBREVIATIONS PER MIL-STD-12.

UNLESS OTHERWISE SPECIFIED:
DIMENSIONS ARE IN INCHES.
DIMENSIONS IN BRACKETS []
ARE IN MILLIMETERS
TOLERANCES ARE:
INCHES ANGLES
.XX ± .25 ± 1°

MATERIAL

FINISH

