

PROPRIETARY AND CONFIDENTIAL

THE INFORMATION CONTAINED IN THIS DRAWING IS THE SOLE PROPERTY OF DYTRAN INSTRUMENTS INC. ANY REPRODUCTION IN PART OR AS A WHOLE WITHOUT THE WRITTEN PERMISSION OF DYTRAN INSTRUMENTS INC. IS PROHIBITED

CABLE LENGTH TOLERANCE

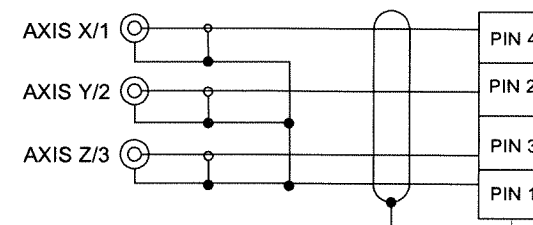
ENGLISH		[METRIC]	
≤1 FT	+1/ -0 IN	≤0.3m	+25mm -0mm
>1 FT - 5 FT	+2/ -0 IN	.0.3 m-1.5m	+50mm -0mm
> 5 FT - 10 FT	+4/ -0 IN	>1.5m-3m	+100mm -0mm
>10 FT - 25FT	+6 / -0 IN	>3m-7.5m	+150mm -0mm
>25 FT	+5% / -0%	>7.5m	+5%/-0%

7 SINGLE CONDUCTOR SHIELDED CABLE

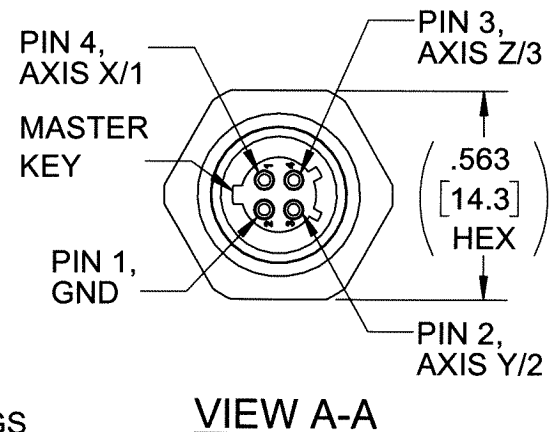
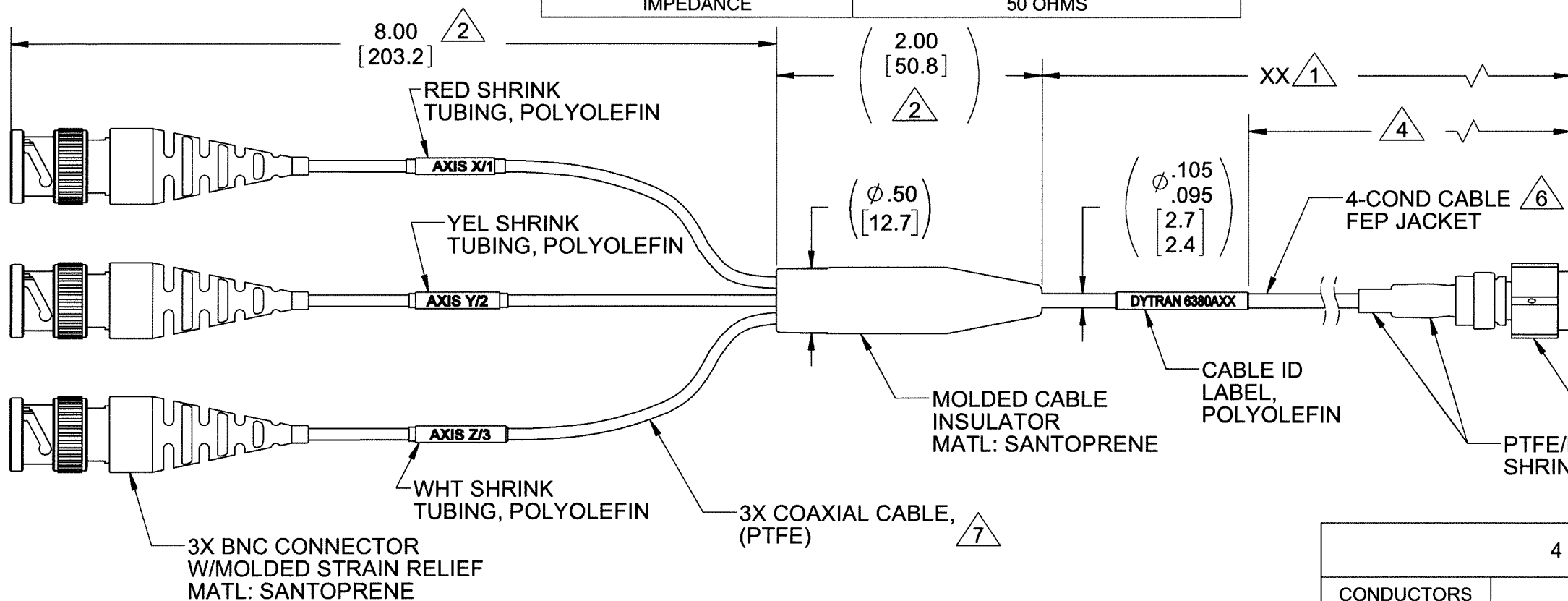
WIRE	30-7/38 SILVER PLATED COPPER
WIRE INSULATION	EXTRUDED PTFE, NATURAL, Ø.033 ±.002
SHIELD	38 AWG SILVER PLATED COPPER BRAID, 95% MIN COVERAGE, Ø.054 NOM
JACKET	WHT PTFE WRAP .005-.010 WALL
DIAMETER	Ø.074±.006
TEMP	200 DEG C WIRE RATED
VOLTAGE	2000 VAC
INDUCTANCE	.80 microH/FT
MINIMUM BEND RADIUS	.38 IN
CAPACITANCE (SHIELD TO CONDUCTOR)	32 pF/FT
IMPEDANCE	50 OHMS

REVISIONS

REV.	ECN	DESCRIPTION	BY/DATE	CHK	APPR
A	12010	INITIAL RELEASE	NDC 07/24/15	LN	RT
B	12722	DELETED NOTE 3. LOW OUT-GASSING.	JS 05/23/15	LA	LN
C	15448	UPDATED PER ECR 11053	NDC 12/12/19	KG	LN



SCHEMATIC DIAGRAM



4 CONDUCTOR, CABLE 6

CONDUCTORS	30 AWG 7/38 TIN PLATED COPPER
VOLTAGE	250 VOLTS
SHIELD	SILVER PLATED COPPER BRAID, 90% MIN COVERAGE
JACKET	FEP, BLACK, .006/.015 WALL
DIAMETER	.095/.105

- 7 SEE TABLE FOR CABLE SPECIFICATION.
- 6 SEE TABLE FOR CABLE SPECIFICATION.
- 5 CONNECTOR PLUG, 4-PIN, GLENAIR P/N: 800-006-16-Z1 6-4SN. MATES WITH DYTRAN MODELS: 3143M12, 3143M13, 3143M14, 3143M16, 3143M17, 3533A
- 4 OPERATING TEMPERATURE: -321°F (-196°C) TO 392°F (200°C)
- 3. DELETED
- 2 OPERATING TEMPERATURE: -67°F (-55°C) TO 250°F (121°C)
- 1 PART NUMBER 6380AXX. "XX" DENOTES LENGTH IN FEET.

NOTES: UNLESS OTHERWISE SPECIFIED

UNLESS OTHERWISE SPECIFIED: INTERPRET DIM & TOL PER ASME Y14.5M - 1994. REMOVE BURRS. COUNTERSINK INTERNAL THDS 90° TO MAJOR DIA. CHAM EXT THDS 45° TO MINOR DIA. THD LENGTHS AND DEPTHS ARE FOR MIN FULL THDS. DIMENSIONS APPLY AFTER FINISHING.

UNLESS OTHERWISE SPECIFIED: DIMENSIONS ARE IN INCHES. DIMENSIONS IN BRACKETS [] ARE IN MILLIMETERS TOLERANCES ARE:

DECIMALS	METRIC	ANGLES
.XX ±.03	.X ± 0.8	±1°
.XXX ±.010	.XX ±0.25	

APPROVALS: ORIG NDC 05/25/15, CHK LN 10/07/15, APP RT 10/07/15

DATE: 10/07/15

THIRD ANGLE PROJECTION USA

DO NOT SCALE DRAWING

DYTRAN INSTRUMENTS, INC. Chatsworth, CA

MASTER ONLY IF IN RED

TITLE: OUTLINE/INSTALLATION DRAWING, 4 PIN PLUG TO (3) BNC, 6380A

SIZE B, CAGE CODE 2W033, DWG NO 127-6380A, REV C

SCALE: 1:1, SHEET 1 OF 1