

PROPRIETARY AND CONFIDENTIAL

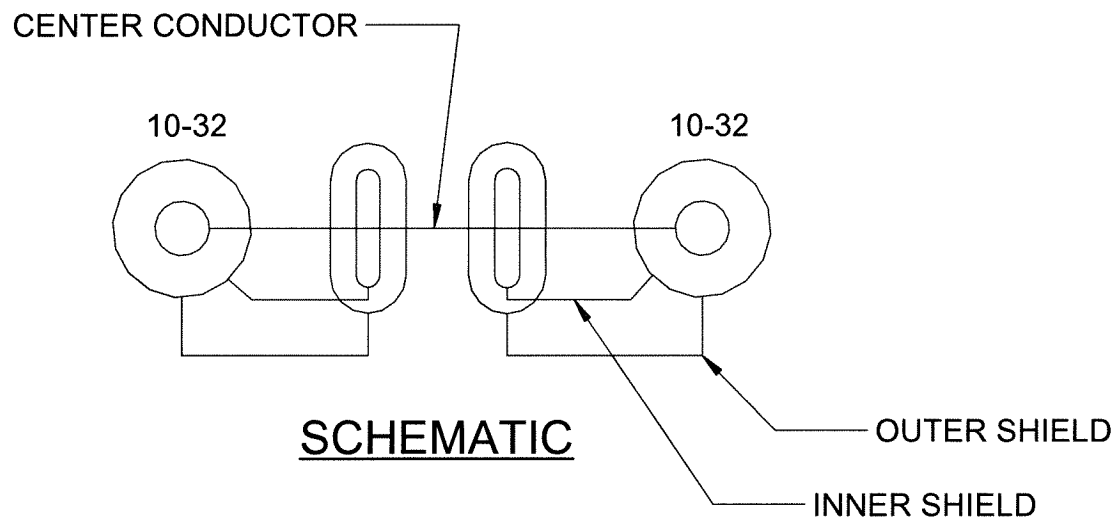
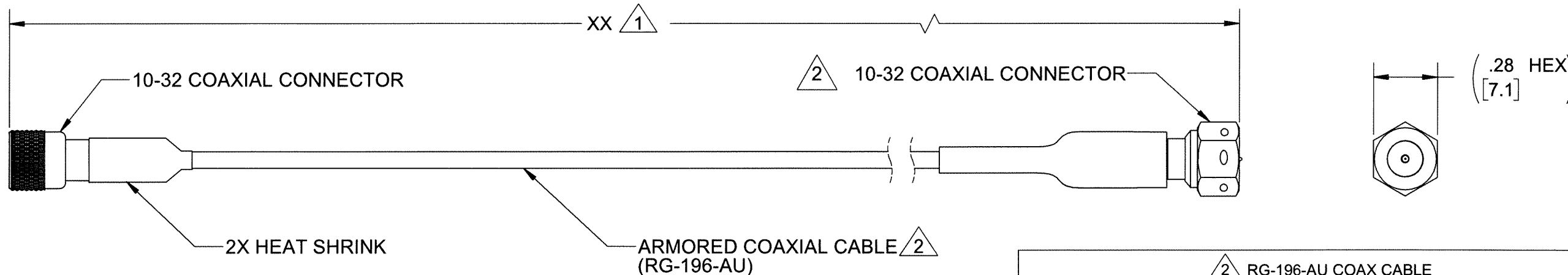
THE INFORMATION CONTAINED IN THIS DRAWING IS THE SOLE PROPERTY OF DYTRAN INSTRUMENTS INC. ANY REPRODUCTION IN PART OR AS A WHOLE WITHOUT THE WRITTEN PERMISSION OF DYTRAN INSTRUMENTS INC. IS PROHIBITED

REVISIONS

| REV. | ECN | DESCRIPTION | BY/DATE | CHK | APPR |
|------|-------|---|--------------|-----|------|
| B | 12786 | REDRAWN ON SOLIDWORKS | LA 07/14/16 | EP | AS |
| C | 13119 | REVISED SCHEMATIC TO INDICATE SHIELDING COMMON TO BOTH CONNECTOR HOUSINGS | LA 11/18/16 | EP | AS |
| D | 14572 | SEE ECN | DA, 10/05/18 | RA | LN |
| E | 15059 | CONNECTOR VIEW UPDATE | DP 05/14/19 | PA | SP |

1 CABLE LENGTH TOLERANCE

| ENGLISH | | [METRIC] | |
|----------------|------------|-------------|-------------|
| ≤1FT | +1/-0 IN | ≤0.3m | +25mm -0mm |
| >1 FT - 5 FT | +2/-0 IN | .0.3 m-1.5m | +50mm -0mm |
| > 5 FT - 10 FT | +4/-0 IN | >1.5m-3m | +100mm -0mm |
| >10 FT - 25FT | +6 / -0 IN | >3m-7.5m | +150mm -0mm |
| >25 FT | +5% / -0% | >7.5m | +5%/-0% |



| 2 RG-196-AU COAX CABLE | |
|------------------------|--|
| AWG | 30-7/38 SILVER PLATED COPPER |
| CONDUCTOR INSULATION | EXTRUDED PTFE, CLEAR, Ø.032 NOM. |
| LOW NOISE WRAP #1 & #2 | CARBON TAPE |
| SHIELD | 38 AWG STAINLESS STEEL BRAID, 90% COVERAGE |
| JACKET | RED PTFE WRAP .005-.010 WALL |
| DIAMETER | Ø.073 |
| OUTER SHIELD | 36 AWG STAINLESS STEEL BRAID 90% COVERAGE |
| OUTER JACKET | EXTRUDED CLEAR FEP (WALL THICKNESS TO MEED O.D.) |
| OUTER DIAMETER | Ø .120/.125 |
| TEMP | 200 DEG C WIRE RATED |
| VOLTAGE | 600V |

- 3 SEE SHEET 2 FOR INSTALLATION AND REMOVAL INSTRUCTIONS.
- 2 SEE CABLE SPECIFICATION TABLE.
- 1 PART NUMBER: 6097AXX (XX DENOTES LENGTH IN FEET).

NOTES: UNLESS OTHERWISE SPECIFIED

UNLESS OTHERWISE SPECIFIED: DIMENSIONS ARE IN INCHES. DIMENSIONS IN BRACKETS [] ARE IN MILLIMETERS TOLERANCES ARE:

| | | |
|-------------|------------|--------|
| DECIMALS | METRIC | ANGLES |
| XX ± .03 | X ± 0.8 | ± 1° |
| .XXX ± .010 | .XX ± 0.25 | |

UNLESS OTHERWISE SPECIFIED: INTERPRET DIM & TOL PER ASME Y14.5M - 1994. REMOVE BURRS. COUNTERSINK INTERNAL THDS 90° TO MAJOR DIA. CHAM EXT THDS 45° TO MINOR DIA. THD LENGTHS AND DEPTHS ARE FOR MIN FULL THDS. DIMENSIONS APPLY AFTER FINISHING.

ALL MACHINED SURFACES. TOTAL RUNOUT WITHIN .005. BREAK SHARP EDGES .005 TO .010. MACHINED FILLET RADII .005 TO .015. WELDING SYMBOLS PER AWS A2.4. ABBREVIATIONS PER MIL-STD-12.

| | | | |
|-----------|----|----------|------------------------------|
| APPROVALS | | DATE | <p>MASTER ONLY IF IN RED</p> |
| ORIG | AB | 04/15/13 | |
| CHK | RA | 04/16/13 | |
| APP | DV | 04/22/13 | |

TITLE: OUTLINE/INSTALLATION DRAWING, CABLE ASSY, 10-32 TO 10-32, MODEL 6097A

| | | | |
|--------|-----------------|------------------|-------|
| SIZE B | CAGE CODE 2W033 | DWG NO 127-6097A | REV E |
|--------|-----------------|------------------|-------|

DO NOT SCALE DRAWING

THIRD ANGLE PROJECTION USA

SCALE: 2:1

SHEET 1 OF 2

PROPRIETARY AND CONFIDENTIAL

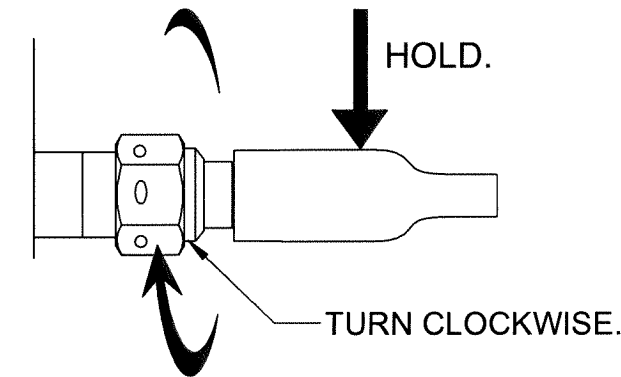
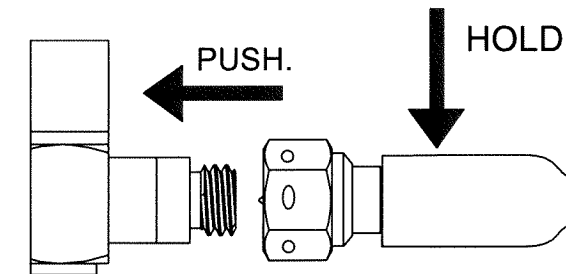
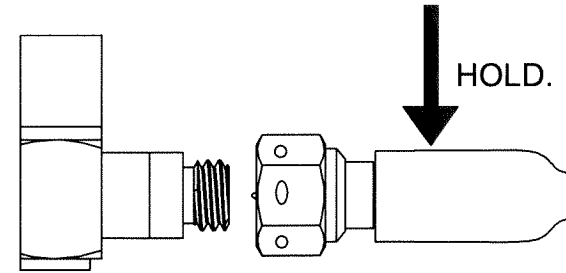
THE INFORMATION CONTAINED IN THIS DRAWING IS THE SOLE PROPERTY OF DYTRAN INSTRUMENTS INC. ANY REPRODUCTION IN PART OR AS A WHOLE WITHOUT THE WRITTEN PERMISSION OF DYTRAN INSTRUMENTS INC. IS PROHIBITED

D

D

1. FIRMLY HOLD MOLDED STRAIN RELIEF TO PREVENT CONNECTOR PLUG FROM TURNING.
2. WHILE HOLDING STRAIN RELIEF, ALIGN CONNECTOR PLUG TO RECEPTACLE AND PUSH TO ENGAGE.
3. TURN COUPLING NUT IN CLOCKWISE DIRECTION UNTIL CONNECTOR IS FULLY COUPLED WITH SENSOR.
4. TO DECOUPLE FROM SENSOR, HOLD MOLDED STRAIN RELIEF AND TURN COUPLING NUT COUNTER-CLOCKWISE. PULL STRAIN RELIEF.

NOTE: DO NOT ROTATE SENSOR TO COUPLE/DECOUPLE. THIS CAN DAMAGE THE PINS AND POSSIBLY BREAK THEM.



C


C

B

B

A

A

| | | | |
|---|---------------------------|----------------------------|-----------------|
|  MASTER ONLY IF IN RED <small>Chatsworth, CA</small> | | | |
| TITLE: OUTLINE/INSTALLATION DRAWING, CABLE ASSY, 10-32 TO 10-32, MODEL 6097A | | | |
| SIZE B | CAGE CODE 2W033 | DWG NO 127-6097A | REV E |
| SCALE: 2:1 | PART NO: | SHEET 2 OF 2 | |