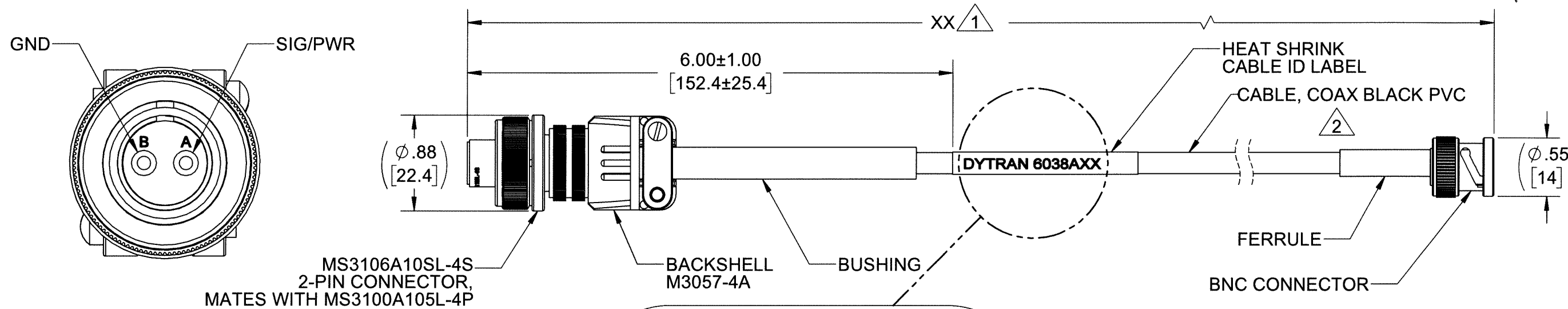


PROPRIETARY AND CONFIDENTIAL

THE INFORMATION CONTAINED IN THIS DRAWING IS THE SOLE PROPERTY OF DYTRAN INSTRUMENTS INC. ANY REPRODUCTION IN PART OR AS A WHOLE WITHOUT THE WRITTEN PERMISSION OF DYTRAN INSTRUMENTS INC. IS PROHIBITED

REVISIONS

REV.	ECN	DESCRIPTION	BY/DATE	CHK	APPR
B	11199	ADDED CABLE ID LABEL. CONVERTED TO SW	EC 08/05/14	JCS	DV
C	14975	SEE ECN	DA, 03/25/19	<i>[Signature]</i>	<i>[Signature]</i>



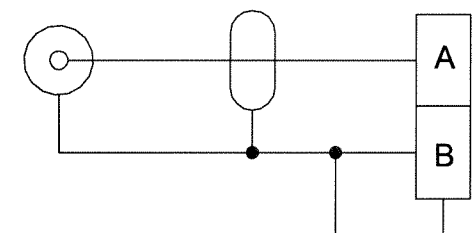
MS3106A10SL-4S
2-PIN CONNECTOR,
MATES WITH MS3100A105L-4P

BACKSHELL
M3057-4A

BUSHING

FERRULE
BNC CONNECTOR

DYTRAN 6038AXX



SCHEMATIC DIAGRAM

2 CABLE, COAXIAL, RG58C/U (MIL-DTL-17)	
CENTER CONDUCTOR	20 AWG 19/33 TINNED COPPER CONDUCTOR
INSULATION	POLYETHYLENE $\phi .116 \pm .004$
SHIELD	36 AWG TINNED COPPER BRAIDED SHIELD 95% COVERAGE
JACKET	BLACK PVC, NON CONTAMINATING
DIAMETER	.195 $\pm .007$
TEMPERATURE RATING	-40 ° C (-40 ° F) TO +85 ° C (185 ° F)

1 CABLE LENGTH TOLERANCE			
ENGLISH		METRIC	
≤1FT	+1/ -0 IN	≤0.3m	+25mm/-0mm
>1 FT - 5 FT	+2/ -0 IN	>0.3m-1.5m	+50mm/-0mm
> 5 FT - 10 FT	+4/ -0 IN	>1.5m-3m	+100mm/-0mm
>10 FT - 25FT	+6 / -0 IN	>3m-7.5m	+150mm/-0mm
>25 FT	+5% / -0%	>7.5m	+5%-0%

UNLESS OTHERWISE SPECIFIED:
 INTERPRET DIM & TOL PER
 ASME Y14.5M - 1994.
 REMOVE BURRS.
 COUNTERSINK INTERNAL THDS
 90° TO MAJOR DIA.
 CHAM EXT THDS 45° TO MINOR DIA.
 THD LENGTHS AND DEPTHS ARE FOR
 MIN FULL THDS.
 DIMENSIONS APPLY AFTER FINISHING.

ALL MACHINED SURFACES \checkmark
 TOTAL RUNOUT WITHIN .005.
 BREAK SHARP EDGES .005 TO .010.
 MACHINED FILLET RADII .005 TO .015.
 WELDING SYMBOLS PER AWS A2.4.
 ABBREVIATIONS PER MIL-STD-12.

UNLESS OTHERWISE SPECIFIED:
 DIMENSIONS ARE IN INCHES
 DIMENSIONS IN BRACKETS [] ARE IN
 MILLIMETERS TOLERANCES ARE:

DECIMALS	METRIC	ANGLES
.XX ±.03	X ± 0.8	±1°
.XXX ±.010	.XX ±0.25	

APPROVALS		DATE
ORIG	EC	08/05/14
CHK	<i>[Signature]</i>	3/20/19
APP	<i>[Signature]</i>	4/3/19

DO NOT SCALE DRAWING



TITLE: OUTLINE/INSTALLATION DRAWING, MODEL 6038A			
SIZE B	CAGE CODE 2W033	DWG NO 127-6038A	REV C
SCALE: 1:1		SHEET 1 OF 1	

- 2 SEE CABLE SPECIFICATION TABLE.
- 1 PART NUMBER 6038AXX (XX DENOTES LENGTH IN FEET)

NOTES: UNLESS OTHERWISE SPECIFIED