

PROPRIETARY AND CONFIDENTIAL

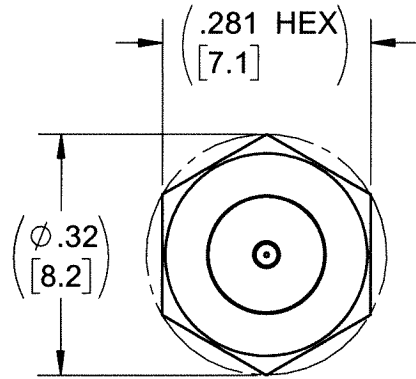
THE INFORMATION CONTAINED IN THIS DRAWING IS THE SOLE PROPERTY OF DYTRAN INSTRUMENTS INC. ANY REPRODUCTION IN PART OR AS A WHOLE WITHOUT THE WRITTEN PERMISSION OF DYTRAN INSTRUMENTS INC. IS PROHIBITED

REVISIONS

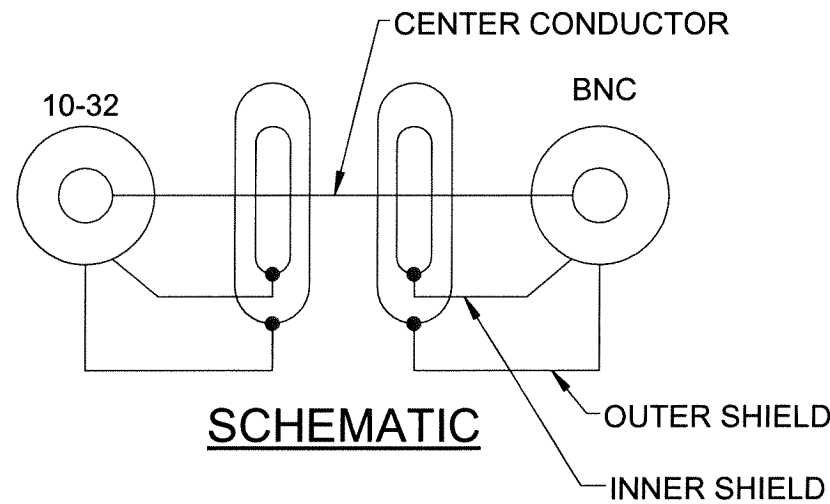
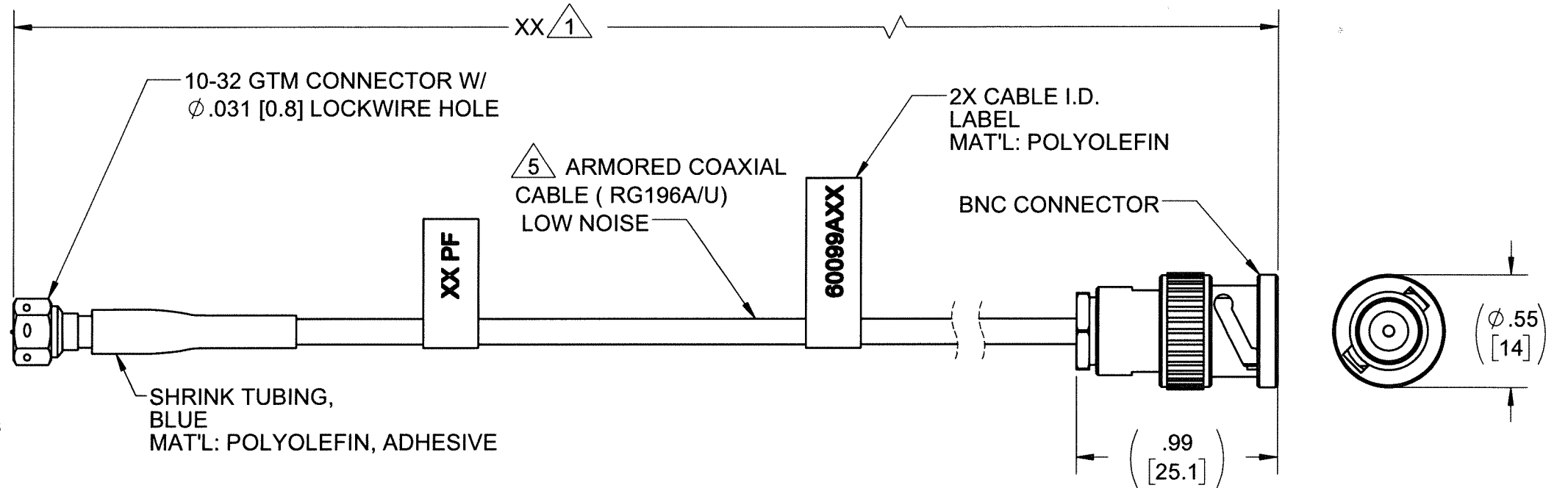
REV	ECN	DESCRIPTION	BY/DATE	CHK	APPR
A	14254	INITIAL RELEASE, SAME AS X1	DP 11/26/18	<i>EP</i>	<i>LW</i>

1 CABLE LENGTH TOLERANCE

ENGLISH		[METRIC]	
≤1FT	+1/ -0 IN	≤0.3m	+25mm -0mm
>1 FT - 5 FT	+2/ -0 IN	.0.3 m-1.5m	+50mm -0mm
> 5 FT - 10 FT	+4/ -0 IN	>1.5m-3m	+100mm -0mm
>10 FT - 25FT	+6 / -0 IN	>3m-7.5m	+150mm -0mm
>25 FT	+5% / -0%	>7.5m	+5%/ -0%



VIEW A-A SCALE 4:1



5 SINGLE CONDUCTOR LOW NOISE CABLE	
AWG	30-7/38 NICKEL PLATED COPPER
TEMP	200 °C WIRE RATED
VOLTAGE	600 VOLTS
CONDUCTOR INSULATION	EXTRUDED PTFE, CLEAR, Ø.032 NOM.
LOW NOISE WRAP #1 & #2	CARBON TAPE
INNER SHIELD	38 AWG SILVER PLATED COPPER BRAID, 85% MIN COVERAGE, Ø.050 NOM
OUTER SHIELD	38AWG SPC BRAID 85% MIN COVERAGE
JACKET	CLEAR TFE WRAP
DIAMETER	Ø.125 NOM.

- 5 SEE TABLE FOR CABLE SPECIFICATIONS.
- 4. PULL STRENGTH, MAX:
 - BNC CONNECTOR: 60 LB DEAD WEIGHT
 - 10-32 GTM CONNECTOR: 85 LB DEAD WEIGHT

3. INSULATION RESISTANCE: >20 TERA-OHMS IMPEDANCE: 52 OHMS CAPACITANCE (NOM.) : 27 pF/FT NOISE: .005 pC/g FT BEND RADIUS: 1.00 MIN

2. OPERATING TEMPERATURE: -40 °C TO +110 °C

1 PART NUMBER: 60099AXX (XX DENOTES LENGTH IN FEET). SEE TABLE FOR LENGTH TOLERANCE.

NOTES: UNLESS OTHERWISE SPECIFIED

UNLESS OTHERWISE SPECIFIED:
 INTERPRET DIM & TOL PER ASME Y14.5M - 1994.
 REMOVE BURRS.
 COUNTERSINK INTERNAL THDS 90° TO MAJOR DIA.
 CHAM EXT THDS 45° TO MINOR DIA.
 THD LENGTHS AND DEPTHS ARE FOR MIN FULL THDS.
 DIMENSIONS APPLY AFTER FINISHING.

ALL MACHINED SURFACES:
 TOTAL RUNOUT WITHIN .005.
 BREAK SHARP EDGES .005 TO .010.
 MACHINED FILLET RADII .005 TO .015.
 WELDING SYMBOLS PER AWS A2.4.
 ABBREVIATIONS PER MIL-STD-12.

APPROVALS		DATE
ORIG	DP	05/14/18
CHK	<i>EP</i>	11/26/18
APP	<i>LW</i>	11/27/18

DO NOT SCALE DRAWING

MASTER COPY
 DYTRAN INSTRUMENTS, INC. Chatsworth, CA

TITLE:
OUTLINE/INSTALLATION DWG, 10-32 GTM TO BNC, MODEL 60099A

SIZE	CAGE CODE	DWG NO	REV
B	2W033	127-60099A	A

SCALE: 3:2 SHEET 1 OF 1