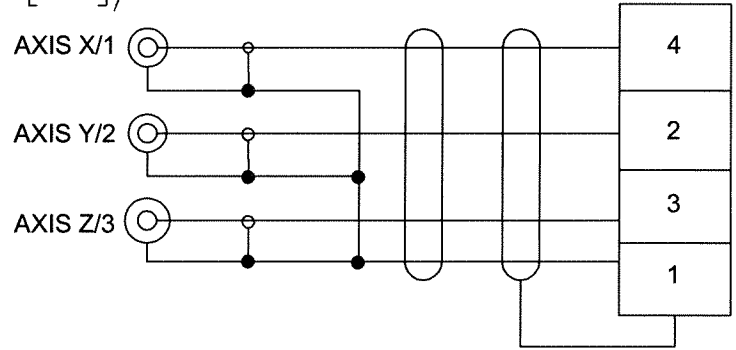
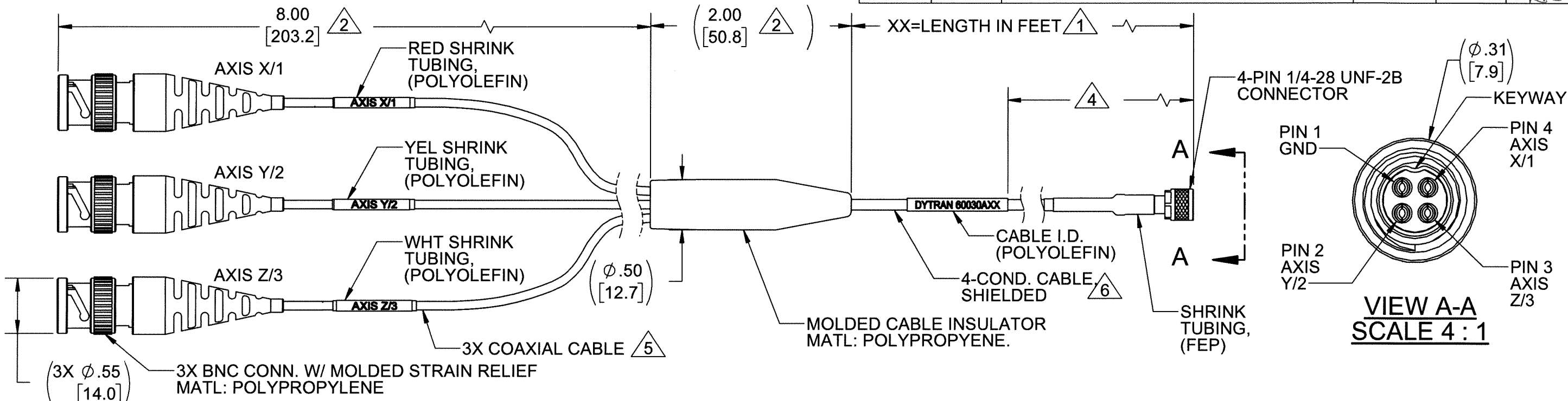


PROPRIETARY AND CONFIDENTIAL

THE INFORMATION CONTAINED IN THIS DRAWING IS THE SOLE PROPERTY OF DYTRAN INSTRUMENTS INC. ANY REPRODUCTION IN PART OR AS A WHOLE WITHOUT THE WRITTEN PERMISSION OF DYTRAN INSTRUMENTS INC. IS PROHIBITED

1 CABLE LENGTH TOLERANCE	
≤1FT	+1/ -0 IN
>1 FT - 5 FT	+2/ -0 IN
> 5 FT - 10 FT	+4/ -0 IN
>10 FT - 25FT	+6 / -0 IN
>25 FT	+5% / -0%

REVISIONS					
REV.	ECN	DESCRIPTION	BY/DATE	CHK	APPR
B	14784	SEE ECN	KG 01/02/19	DP	LN
C	15346	NOTE 3 IS: LOW OUT-GASSING PER NASA SPECIFICATIONS OF TML... WAS: LOW OUT-GASSING	DP 09/27/19	RA	LN
D	15465	SEE ECN	DP 12/23/19	KG	LN



**SCHMATIC DIAGRAM**

5 COAXIAL CABLE	
AWG	30-7/38 SILVER PLATED COPPER
CONDUCTOR INSULATION	WRAPPED PTFE, NATURAL, Ø.033 ±.002
LOW NOISE WRAP #1 & #2	CARBON TAPE
SHIELD	38 AWG SILVER PLATED COPPER BRAID, 95% MIN COVERAGE, Ø.054 NOM
JACKET	WHT PTFE WRAP .005-.010 WALL
DIAMETER	Ø.074±.006
TEMP	200 DEG C WIRE RATED
WITHSTANDING VOLTAGE	2000 VAC
CAPACITANCE (SHIELD TO CONDUCTOR)	32 pF/FT
IMPEDANCE	50 OHMS
INDUCTANCE	.80 microH/FT
RESISTANCE	.20 OHM
MINIMUM BEND RADIUS	1 IN

6 4 CONDUCTOR, SHIELDED CABLE	
WIRE	30 AWG 7/38 SILVER PLATED COPPER, 2 MICRON MIN.
WIRE INSULATION #1	EXPANDED PTFE TAPE
WIRE INSULATION #2	POLYIMIDE TAPE
WIRE INSULATION #3	POLYIMIDE TAPE
HELICOIDAL SHIELD	SILVER PLATED COPPER BRAID, 2 MICRON MIN COVERAGE
HELICOIDAL SHIELD INSULATION	POLYIMIDE TAPE
JACKET	POLYIMIDE TAPE
DIAMETER	.087 MAX
TEMP	-200°C (-328°F) TO +120°C (+248°F)
VOLTAGE	600 VOLTS

- 6 SEE TABLE FOR CABLE SPECIFICATIONS.
  - 5 SEE TABLE FOR CABLE SPECIFICATIONS.
  - 4 OPERATING TEMPERATURE: -320°F (-196°C) TO +250°F (+121°C)
  - 3. CABLE IS LOW OUT-GASSING PER NASA SPECIFICATIONS OF TML (TOTAL MASS LOSS) LESS THAN 1% AND CVCM (COLLECTED VOLATILE CONDENSABLE MASS) LESS THAN 0.1%.
  - 2 TEMPERATURE RATING: -67°F (-55°C) TO +248°F (+120°C).
  - 1 PART NUMBER 60030AXX. "XX" DENOTES LENGTH IN FEET. SEE TABLE FOR CABLE TOLERANCE.
- NOTES: UNLESS OTHERWISE SPECIFIED

UNLESS OTHERWISE SPECIFIED:  
 INTERPRET DIM & TOL PER ASME Y14.5M - 1994.  
 REMOVE BURRS.  
 COUNTERSINK INTERNAL THDS 90° TO MAJOR DIA.  
 CHAM EXT THDS 45° TO MINOR DIA.  
 THD LENGTHS AND DEPTHS ARE FOR MIN FULL THDS.  
 DIMENSIONS APPLY AFTER FINISHING.

ALL MACHINED SURFACES TOTAL RUNOUT WITHIN .005. BREAK SHARP EDGES .005 TO .010. MACHINED FILLET RADII .005 TO .015. WELDING SYMBOLS PER AWS A2.4. ABBREVIATIONS PER MIL-STD-12.

DECIMALS .XX ±.03 .XXX ±.010		METRIC X ± 0.8 XX ± 0.25		ANGLES ±1°	
APPROVALS		DATE			
ORIG	RA	01/17/17			
CHK	MH	01/19/17			
APP	AS	01/19/17			
DO NOT SCALE DRAWING		THIRD ANGLE PROJECTION			

**DYTRAN INSTRUMENTS, INC.** Chatsworth, CA

**MASTER ONLY IF IN RED**

TITLE: **OUTLINE/INSTALLATION DWG, 4 PIN LONG NOSE TO (3) BNC, LOW OUTGASSING, 60030A, CRYOGENIC**

SIZE <b>B</b>	CAGE CODE <b>2W033</b>	DWG NO <b>127-60030A</b>	REV <b>D</b>
SCALE: 1:1		SHEET 1 OF 1	