

REVISIONS					
REV.	ECN	DESCRIPTION	BY/DATE	CHK	APPR
A	15327	INITIAL RELEASE	KG 02/17/20	AM	[Signature]

PROPRIETARY AND CONFIDENTIAL

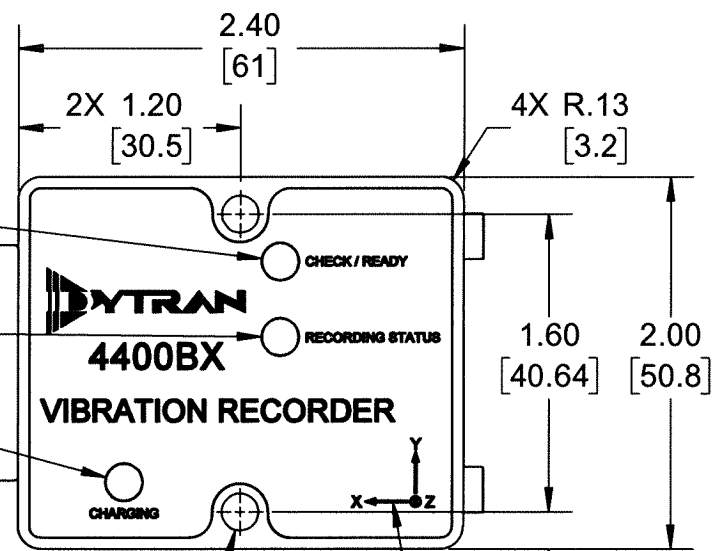
THE INFORMATION CONTAINED IN THIS DRAWING IS THE SOLE PROPERTY OF DYTRAN INSTRUMENTS INC. ANY REPRODUCTION IN PART OR AS A WHOLE WITHOUT THE WRITTEN PERMISSION OF DYTRAN INSTRUMENTS INC. IS PROHIBITED

MODEL	RANGE
4400B1	±2g
4400B2	±19g
4400B3	±200g

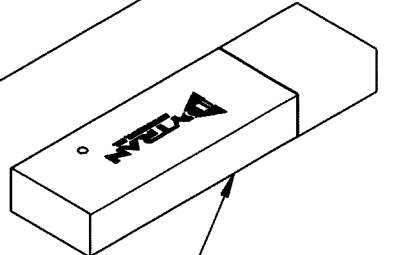
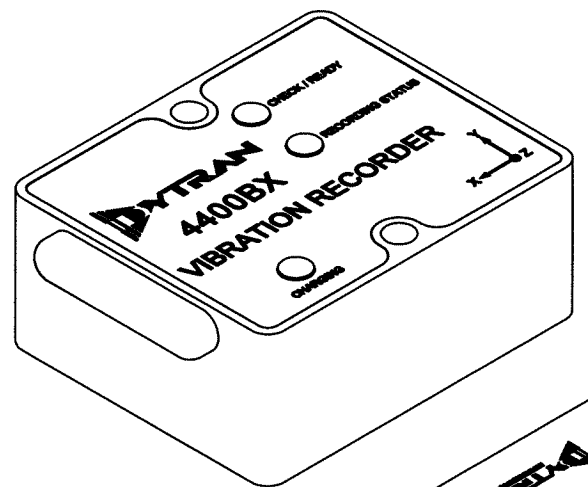
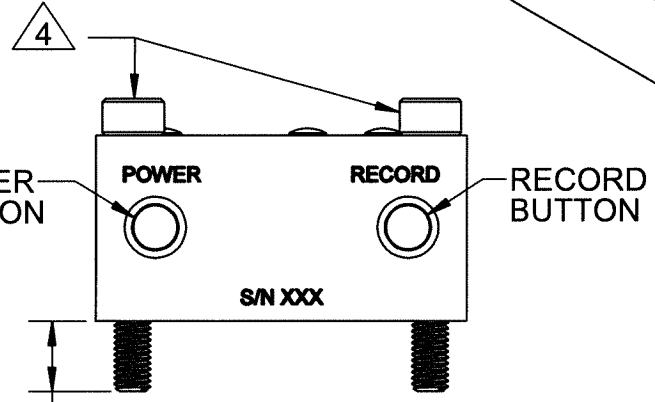
HARDWARE CHECK / READY INDICATOR LED

RECORDING INDICATOR LED

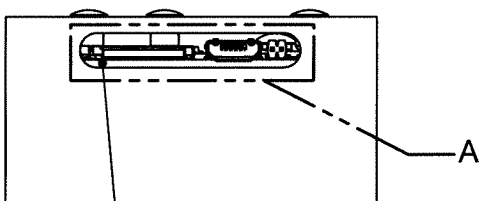
CHARGING INDICATOR LED



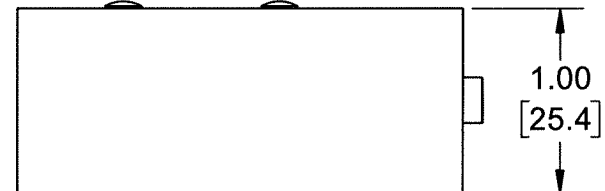
2X ϕ .20 THRU [5.1]



9007 SOFTWARE, SUPPLIED



MOLDED COVER NOT SHOWN FOR CLARITY



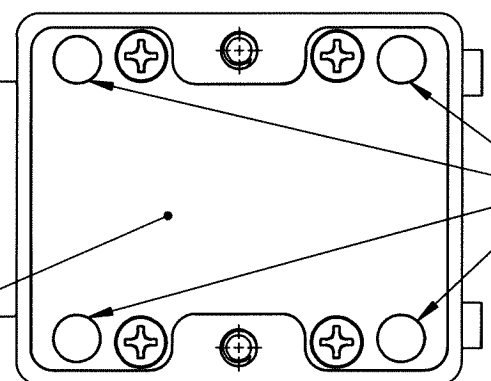
POWER BUTTON

RECORD BUTTON

RECORD BUTTON

MOLDED COVER

8 BOTTOM COVER, REMOVABLE



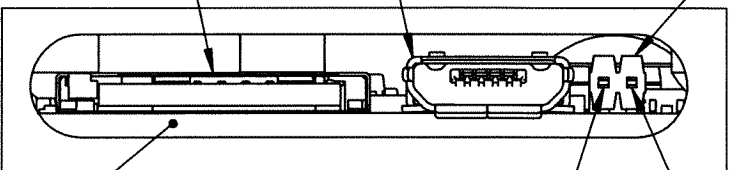
RARE EARTH MAGNETS, PERMANENTLY INSTALLED 5

(2X .38 [9.6])

BATTERY CHARGING PORT, MICRO-USB

MICRO-SD CARD SLOT

7 SYNCHRONIZATION CONNECTOR



8 MOLDED COVER NOT SHOWN FOR CLARITY

DETAIL A
SCALE 3:1

- 8 MOLDED COVER AND BOTTOM COVER MUST BE INSTALLED TO MEET IP RATING.
 - 7 MATING SYNCHRONIZATION CABLE: DYTRAN MODEL 60153AXX.
 - 6 ARROWS INDICATE DIRECTIONS OF ACCELERATION FOR POSITIVE OUTPUT.
 - 5 MAGNETS PULL RATING: UP TO 8.4 lb.
NOTE: MAXIMUM PULL RATINGS ARE BASED ON DIRECT CONTACT WITH RUST-FREE AND UNPAINTED IRON PLATE. VARIATIONS IN MATERIAL CONDITION WILL SIGNIFICANTLY REDUCE THESE RATINGS.
 - 4 MOUNTING SCREW, MODEL 6246, 10-32 UNF-3A X 1.25, QTY 2, SUPPLIED.
MOUNTING SCREW, MODEL 6694A1, M5 X 0.8 X 35mm, QTY 2, SUPPLIED.
 - 3. OPERATING TEMPERATURE, DISCHARGING: -4°F TO +140°F (-20°C TO +60°C)
OPERATING TEMPERATURE, CHARGING: +32°F TO +113°F (0°C TO +45°C)
 - 2. HOUSING MATERIAL: ALUMINUM ALLOY, ANODIZED, COLOR: BLUE.
 - 1. WEIGHT: 150 GRAMS, MAX.
- NOTES: UNLESS OTHERWISE SPECIFIED

UNLESS OTHERWISE SPECIFIED: INTERPRET DIM & TOL PER ASME Y14.5M - 1994. REMOVE BURRS. COUNTERSINK INTERNAL THDS 90° TO MAJOR DIA. CHAM EXT THDS 45° TO MINOR DIA. THD LENGTHS AND DEPTHS ARE FOR MIN FULL THDS. DIMENSIONS APPLY AFTER FINISHING.	UNLESS OTHERWISE SPECIFIED: DIMENSIONS ARE IN INCHES. DIMENSIONS IN BRACKETS [] ARE IN MILLIMETERS TOLERANCES ARE:				MASTER ONLY IF IN RED	
	DECIMALS .XX ±.03 .XXX ±.010	METRIC X ± 0.8 .XX ±0.25				
	APPROVALS ORIG KG CHK AM APP [Signature]	DATE 10/18/19 03/12/20 5/12/20	SIZE B CAGE CODE 2W033	DWG NO 127-4400B REV A		
	ALL MACHINED SURFACES 63/ TOTAL RUNOUT WITHIN .005. BREAK SHARP EDGES .005 TO .010. MACHINED FILLET RADII .005 TO .015. WELDING SYMBOLS PER AWS A2.4. ABBREVIATIONS PER MIL-STD-12.	DO NOT SCALE DRAWING	SCALE: 1:1	SHEET 1 OF 1		

MODEL NUMBER 4400B3	PERFORMANCE SPECIFICATIONS	DOC NO. PS4400B3
	ACCELERATION RECORDER, TRIAXIAL	REV A, ECN 15327, 02/24/20



- RECORDS THREE-AXIS VIBRATION UP TO 15 HOURS
- IP64 RATED
- MICRO-SDHC CARD COMPATIBLE
- DUAL MOUNTING CONFIGURATIONS
- INTEGRATED ANTI-ALIASING FILTERS

PHYSICAL

Weight, Max.
Mounting
Housing Material

ENGLISH		SI	
5.3	oz	150	grams
Screws / Magnets		Screws / Magnets	
Aluminum, Anodized		Aluminum, Anodized	

PERFORMANCE

Acceleration Range
Maximum Frequency Range, -3dB
Resonance Frequency
Linearity [1]
Transverse Sensitivity, Max
Noise, Max.
Recording Time, Max.
Sampling rate
Memory Card Type
Acquisition Type

ENGLISH		SI	
±200	Gpeak	±1962	m/s ² peak
0 to 1000	Hz	0 to 1000	Hz
>5.5	kHz	>5.5	kHz
< ±2.0	%F.S.	< ±2.0	%F.S.
5	%	5	%
0.2	G rms	1962	mm/s ² rms
15	hours	15	hours
100 - 10,000	samples/s	100 - 10,000	samples/s
Micro-SDHC		Micro-SDHC	
Free Run / Triggered / Time		Free Run / Triggered / Time	

ELECTRICAL

Battery

1300mAh (Rechargeable)	1300mAh (Rechargeable)
------------------------	------------------------

ENVIRONMENTAL

Shock Max
Vibration Max
Operating Temperature, Discharging
Operating Temperature, Charging
Seal [3]

ENGLISH		SI	
1,000	g pk	9810	m/s ²
250	g pk	2453	m/s ²
-4 to +140	°F	-20 to +60	°C
+32 to +113	°F	0 to +45	°C
Environmental / IP64		Environmental / IP64	

Model	Range (Gpeak)	Noise (G rms)	Oper. Temp (°F)	BandWidth (Hz)
4400B1	±2	0.01	-4 to +140	0 to 1000
4400B2	±19	0.02	-4 to +140	0 to 1000

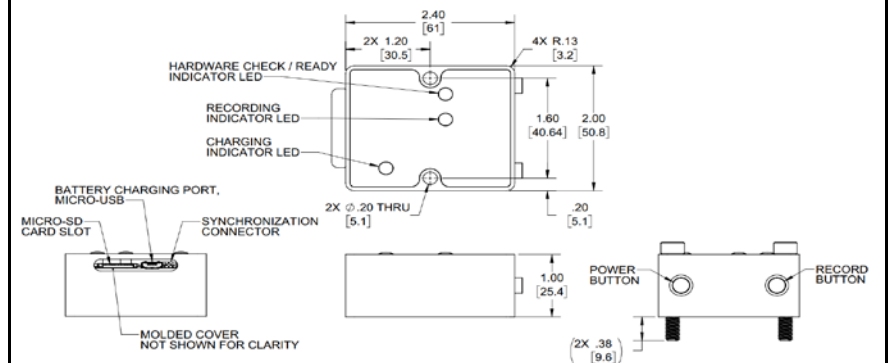
Refer to the performance specifications of the products in this family for detailed description

Supplied Accessories:

- 1) Accredited calibration certificate (ISO 17025)
- 2) Mounting Screw, Model 6246, 10-32 X 1.25, Qty. 2
- 3) Mounting Screw, Model 6694A1, M5x0.8 X 35mm, Qty. 2
- 4) 9007 Software

Notes:

- [1] Linearity is % of specified full scale (or any less full-scale range), zero-based best fit straight line method.
- [2] In the interest of constant product improvement, we reserve the rights to change the specifications without notice. It is the customer's responsibility to validate that a particular product with the properties described in the product specification is suitable for use in a particular application. Parameters provided in datasheets and / or specifications may vary in different applications and performance may vary overtime. All operating parameters, including typical parameters, must be validated for each customer application by the customer's technical experts.
- [3] Molded cover and bottom cover with integral sealing gasket must both be installed to meet IP64 rating.



Units on the line drawing are in inches, units in brackets are in millimeters. Refer to 127-4400B for more information.



21592 Marilla Street, Chatsworth, California 91311 Phone: 818.700.7818 Fax: 818.700.7880 www.dytran.com For permission to reprint this content, please contact info@dytran.com