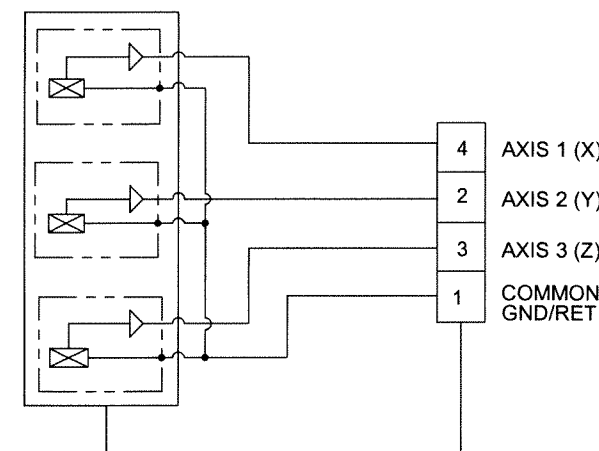
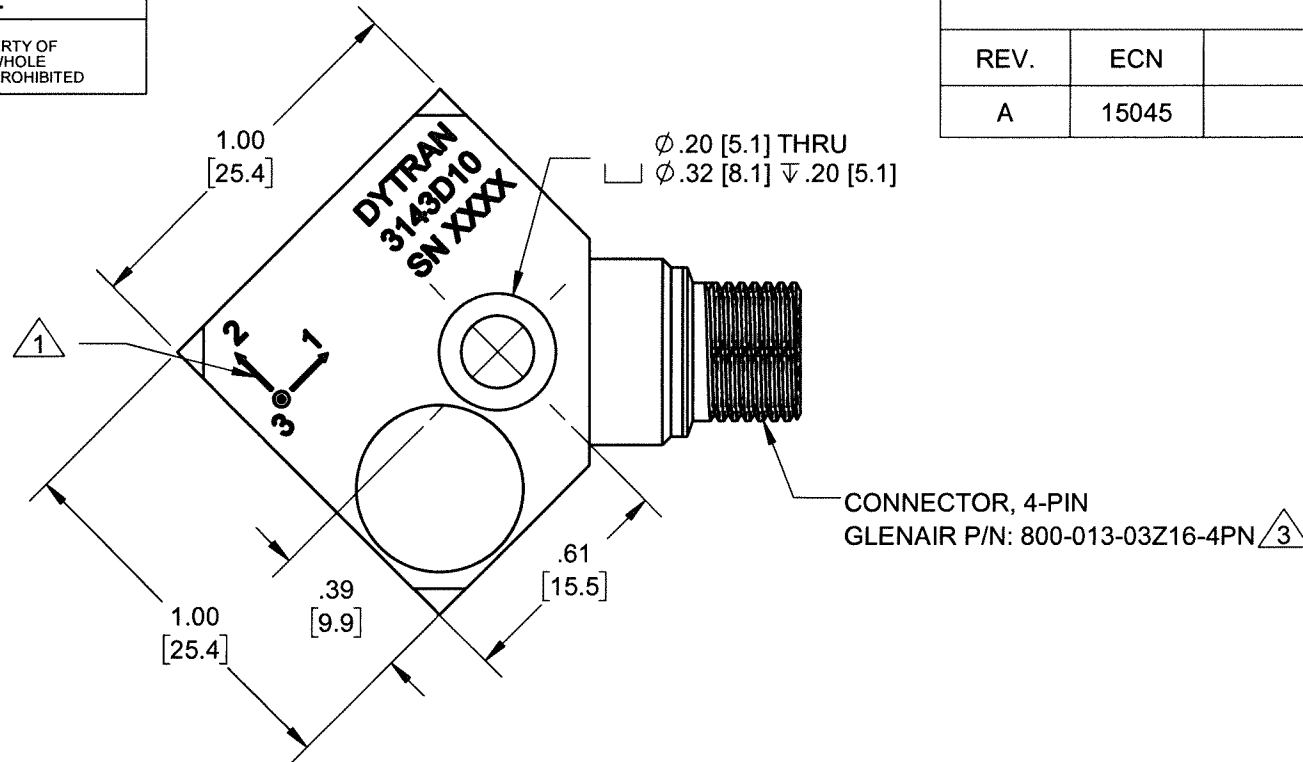


PROPRIETARY AND CONFIDENTIAL

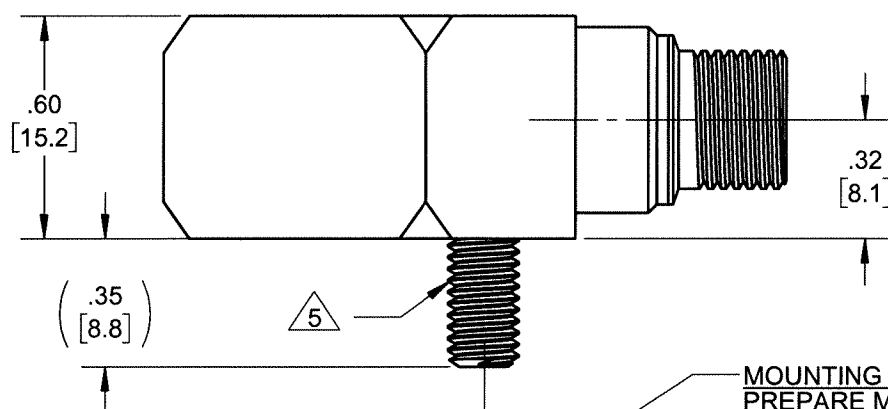
THE INFORMATION CONTAINED IN THIS DRAWING IS THE SOLE PROPERTY OF DYTRAN INSTRUMENTS INC. ANY REPRODUCTION IN PART OR AS A WHOLE WITHOUT THE WRITTEN PERMISSION OF DYTRAN INSTRUMENTS INC. IS PROHIBITED

REVISIONS

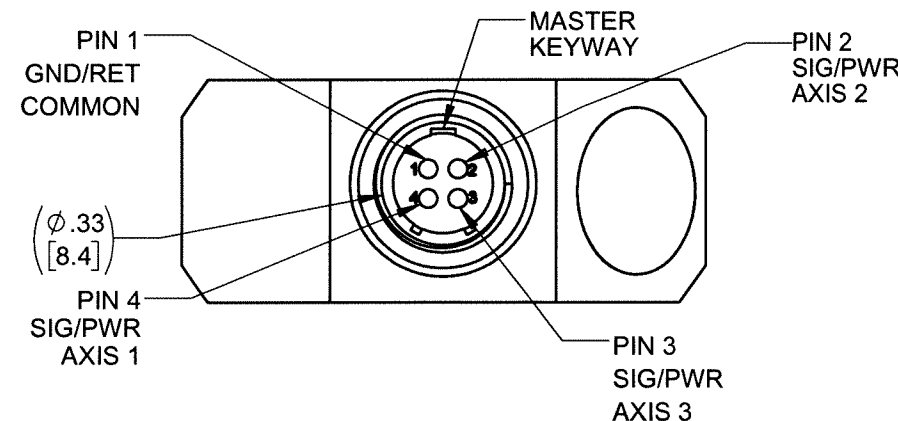
REV.	ECN	DESCRIPTION	BY/DATE	CHK	APPR
A	15045	INITIAL RELEASE, SAME AS X1	DP 05/17/19	[Signature]	[Signature]



SCHEMATIC DIAGRAM



MOUNTING RECOMMENDATIONS:
 PREPARE MOUNTING SURFACE FLAT TO .001 TIR.
 TAP 10-32 UNF-2B ∇.40 [10] MIN.
 RECOMMENDED MOUNTING TORQUE 10 -12 LB-IN.
 FOR BEST FREQUENCY RESPONSE, MOUNTING SURFACE MUST CONTACT THE ENTIRE ACCELEROMETER MOUNTING SURFACE.



6. MINOR VOIDS, SCARS, SCRATCHES AND MOUNTING BLEMISH / WITNESS MARKS ON EXTERNAL SURFACES ARE ALLOWED DUE TO RESTRAINING AND HANDLING DURING TESTING, TRANSPORT OR PROCESSING. THESE APPEAR AS INDICATORS THAT DO NOT AFFECT FORM, FIT OR FUNCTION AS INTENDED BY DESIGN OR APPLICATION

- 5 MOUNTING SCREW, 10-32 UNF-2B X .75, MODEL 6543, SUPPLIED.
- 4. HOUSING AND CONNECTOR MATERIAL: 300 SERIES STAINLESS STEEL
- 3 MATING CABLES: 6380AXX, 6381AXX, OR 60042AXX
- 2. WEIGHT: 65 GRAMS, MAX.
- 1 ARROWS INDICATE DIRECTION OF ACCELERATION FOR POSITIVE OUTPUT.

NOTES: UNLESS OTHERWISE SPECIFIED

UNLESS OTHERWISE SPECIFIED: INTERPRET DIM & TOL PER ASME Y14.5M - 1994. REMOVE BURRS. COUNTERSINK INTERNAL THDS 90° TO MAJOR DIA. CHAM EXT THDS 45° TO MINOR DIA. THD LENGTHS AND DEPTHS ARE FOR MIN FULL THDS. DIMENSIONS APPLY AFTER FINISHING. ALL MACHINED SURFACES. TOTAL RUNOUT WITHIN .005. BREAK SHARP EDGES .005 TO .010. MACHINED FILLET RADII .005 TO .015. WELDING SYMBOLS PER AWS A2.4. ABBREVIATIONS PER MIL-STD-12.	UNLESS OTHERWISE SPECIFIED: DIMENSIONS ARE IN INCHES. DIMENSIONS IN BRACKETS [] ARE IN MILLIMETERS TOLERANCES ARE:				MASTER ONLY IF IN RED	
	DECIMALS .XX ±.03 .XXX ±.010	METRIC X ± 0.8 .XX ±0.25				
	ORG	DP	04/02/19	TITLE: OUTLINE/INSTALLATION DWG, MODEL 3143D10		
	CHK [Signature]	APP [Signature]	5/20/19	SIZE B	CAGE CODE 2W033	DWG NO 127-3143D10

DO NOT SCALE DRAWING

THIRD ANGLE PROJECTION USA

SCALE: 3:2

SHEET 1 OF 1

Model Number
3143D10

PERFORMANCE SPECIFICATIONS

DOC NO
PS3143D10

IEPE TRIAXIAL ACCELEROMETER

REV B, ECN 15662, 03/31/20



- MECHANICALLY AND ELECTRICALLY FILTERED
- HERMETICALLY SEALED
- CASE GROUND ISOLATED

PHYSICAL

Weight, Max
Connector [1]
Mounting Provision
Material, Housing/Connector
Sensing Element
Element Style

Type
Thru Hole

ENGLISH		SI	
2.3	oz	65	grams
4 - Pin		4 - Pin	
10-32 Mounting Screw		10-32 Mounting Screw	
300 Series S.S.		300 Series S.S.	
Quartz		Quartz	
Planar Shear		Planar Shear	

PERFORMANCE

Sensitivity, ±5% [2]
Range for ± 5 Volts Output
Frequency Response, ±3dB
Resonant Frequency
Broadband Resolution
Linearity [3]
Maximum Transverse Sensitivity
Strain Sensitivity @ 250µε

1.0	mV/g	0.1	mV/m/s ²
±5000	g peak	±49050	m/s ²
0.5 to 10000	Hz	0.5 to 10000	Hz
> 25	kHz	> 25	kHz
0.070	g rms	0.69	m/s ² rms
± 1	% F.S.	± 1	% F.S.
6	%	6	%
0.012	g/µε	0.12	m/s ² /µε

ENVIRONMENTAL

Maximum Vibration
Maximum Shock
Operating Temperature Range
Seal

6000	g peak	58860	m/s ² peak
7000	g peak	68670	m/s ² peak
-60 to 250	°F	-51 to 121	°C
Hermetic		Hermetic	

ELECTRICAL

Supply Current Range [4]
Compliance Voltage Range
Output Impedance, Typ
Bias Voltage
Discharge Time Constant
Electrical Isolation

2 to 20	mA	2 to 20	mA
+18 to +30	Volts	+18 to +30	Volts
100	Ω	100	Ω
+7.0 to +11.5	VDC	+7.0 to +11.5	VDC
0.5 to 2.0	Sec	0.5 to 2.0	Sec
10	GΩ, min	10	GΩ, min

This family also includes:

Model	Sensitivity (mV/g)	Frequency Response (Hz)	Time Constant (Sec)	Operating Temp (°F)

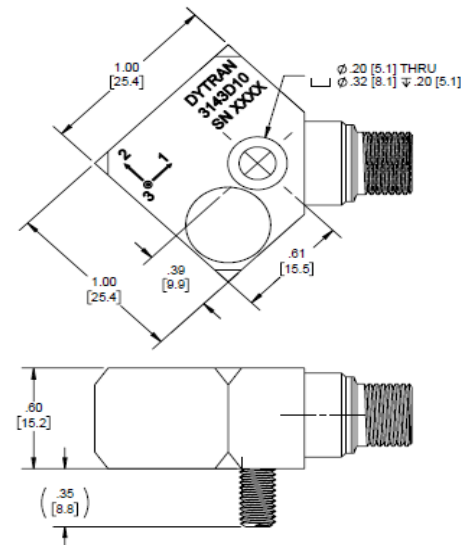
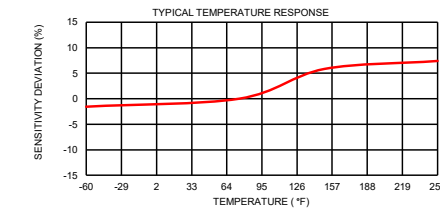
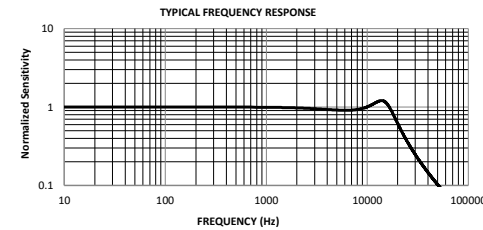
Refer to the performance specifications of the products in this family for detailed description

Supplied Accessories:

- 1) Accredited calibration certificate (ISO 17025)
- 2) Mounting screw 6543, 10-32 x .75, QTY 1

Notes:

- [1] Glenair P/N: 800-013-03-Z16-4PN. Mates with Dytran cables: 6380AXX and 60042AXX.
 - [2] Measured at 100Hz, 10 Grms per ISA RP 37.2.
 - [3] Measured using zero-based straight line method, % of F.S. or any lesser range.
 - [4] Do not apply power to this system without current limiting, 20 mA MAX. To do so will destroy the amplifier.
 - [5] In the interest of constant product improvement, we reserve the right to change specifications without notice.
- It is the customer's responsibility to validate that a particular product with the properties described in the product specification is suitable for use in a particular application. Parameters provided in datasheets and / or specifications may vary in different applications and performance may vary overtime. All operating parameters, including typical parameters, must be validated for each customer application by the customer's technical experts.



Units on the line drawing are in inches, units in brackets are in millimeters. Refer to 127-3143D10 for more information.



21592 Marilla Street, Chatsworth, California 91311 Phone: 818.700.7818 Fax: 818.700.7880 www.dytran.com
For permission to reprint this content, please contact info@dytran.com