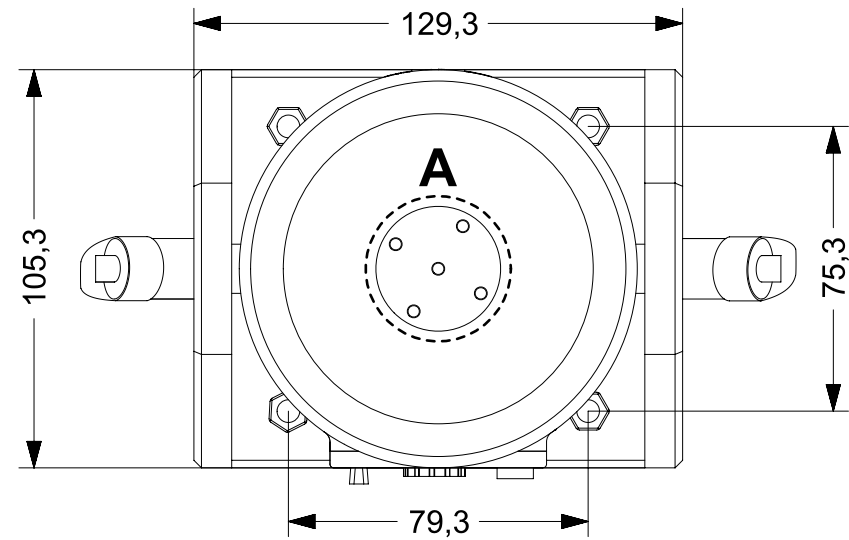
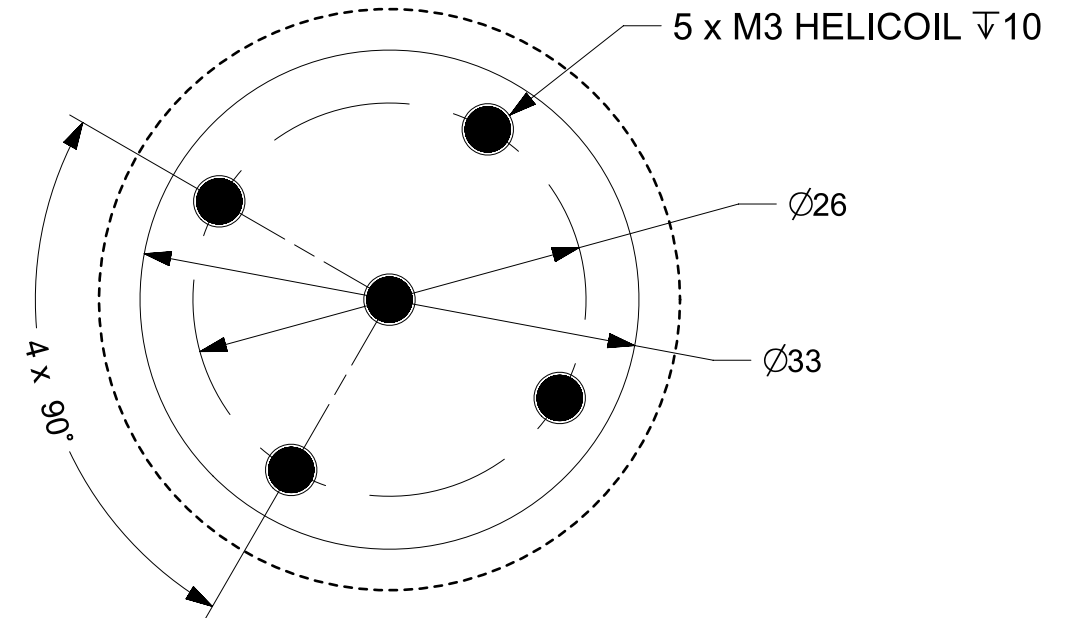


DYNALABS PERMANENT MAGNET SHAKER(DYN-PM-20)

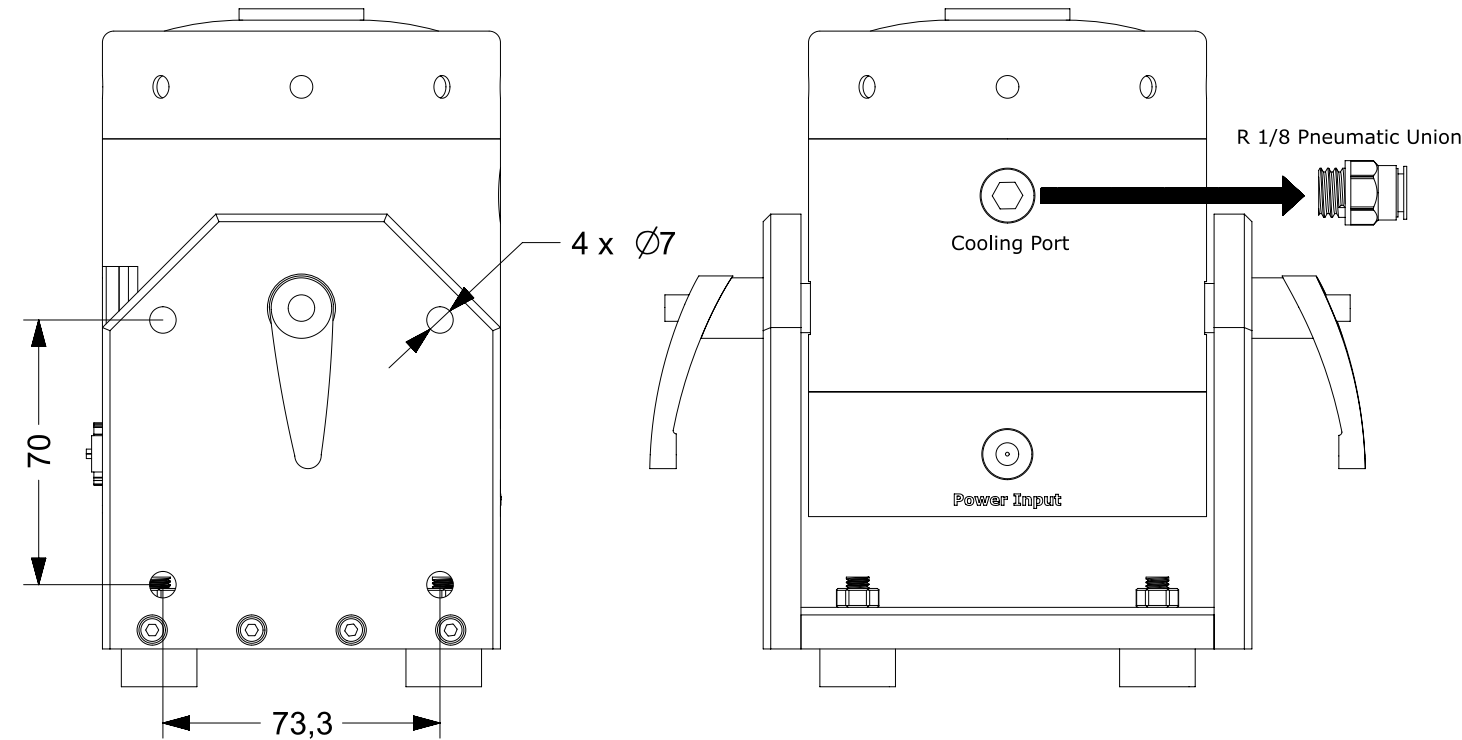
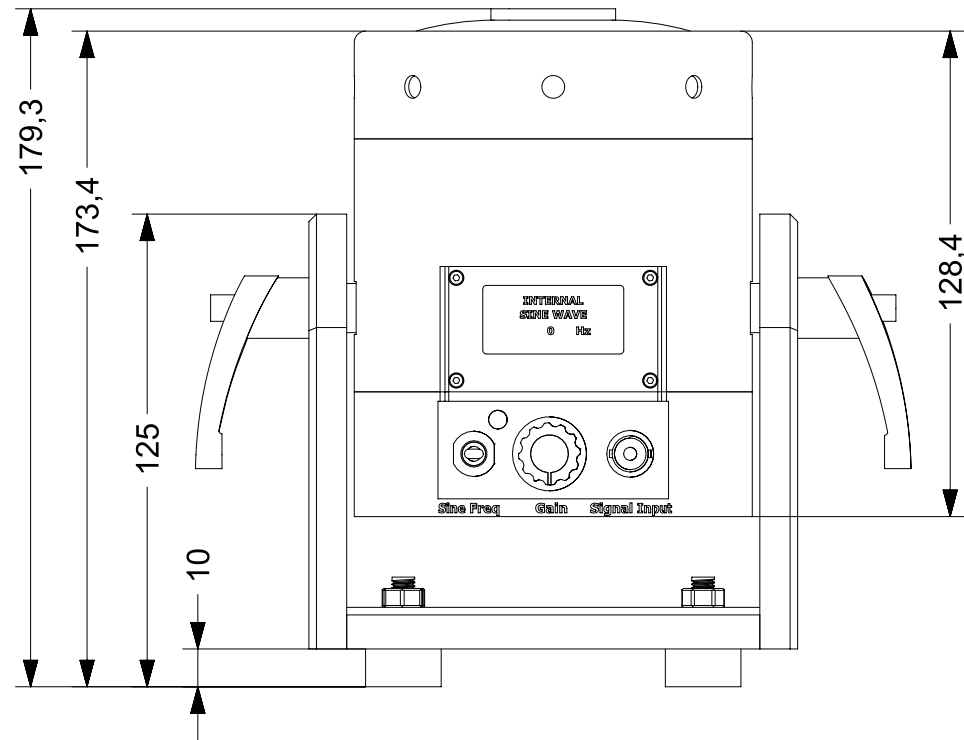
Output Force(Sinus)	20 N
Output Force(Shock)	40 N
Frequency Range	0-12 kHz
Payload(Vertical)	0.8 kg
Displacement(P-P)	5 mm
Maximum Acceleration	40 g
Shaker Weight	4.1 kg
Cooling System	Natural Convection
Operating Temperature Range	5-35 °C
Suspension	Spring
Maximum Input Current	4A (RMS)
AMPLIFIER	INTERNAL
Power Supply Voltage	19 V (DC)
Power Supply Current	4.74 A
External Signal Voltage Level	1 VAC(PEAK)



Mounting Interface



DETAIL-A



System Components : Electrodynamics Shaker + Power Adapter + Signal Cable(BNC-BNC) + R 1/8 Pneumatic Union + M3X10 Stainless Bolt + User Manual

All dimensions in mm