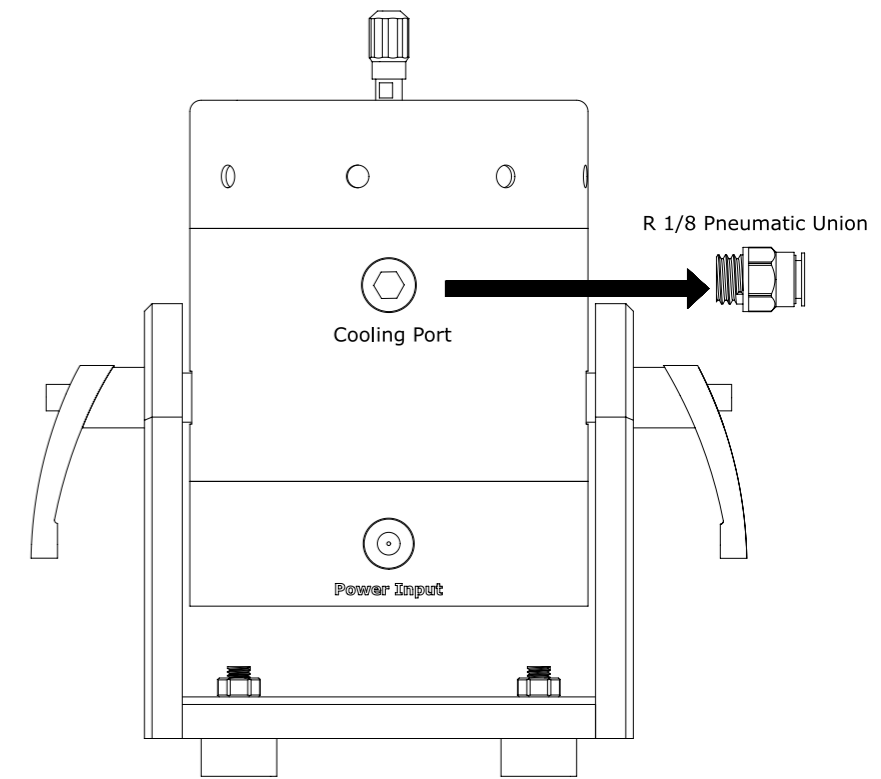
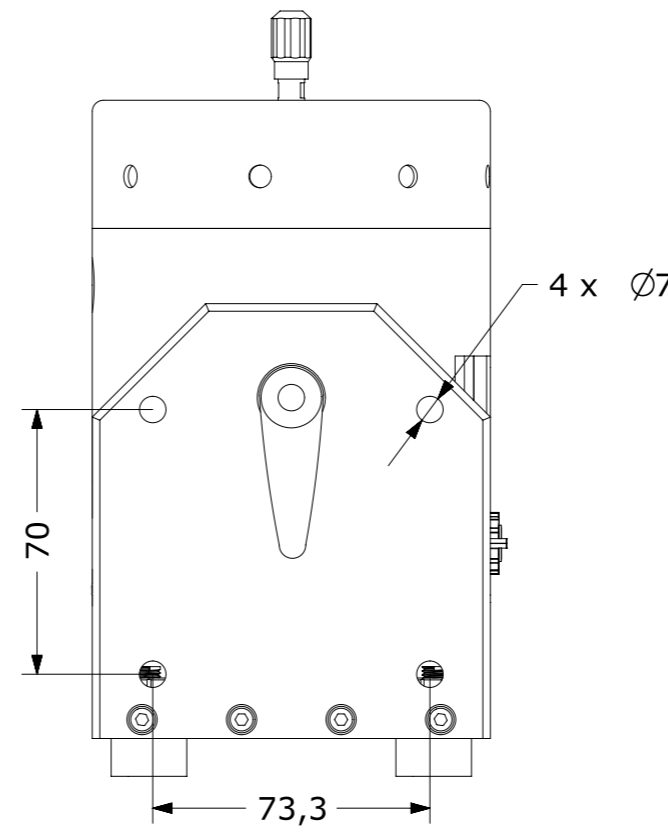
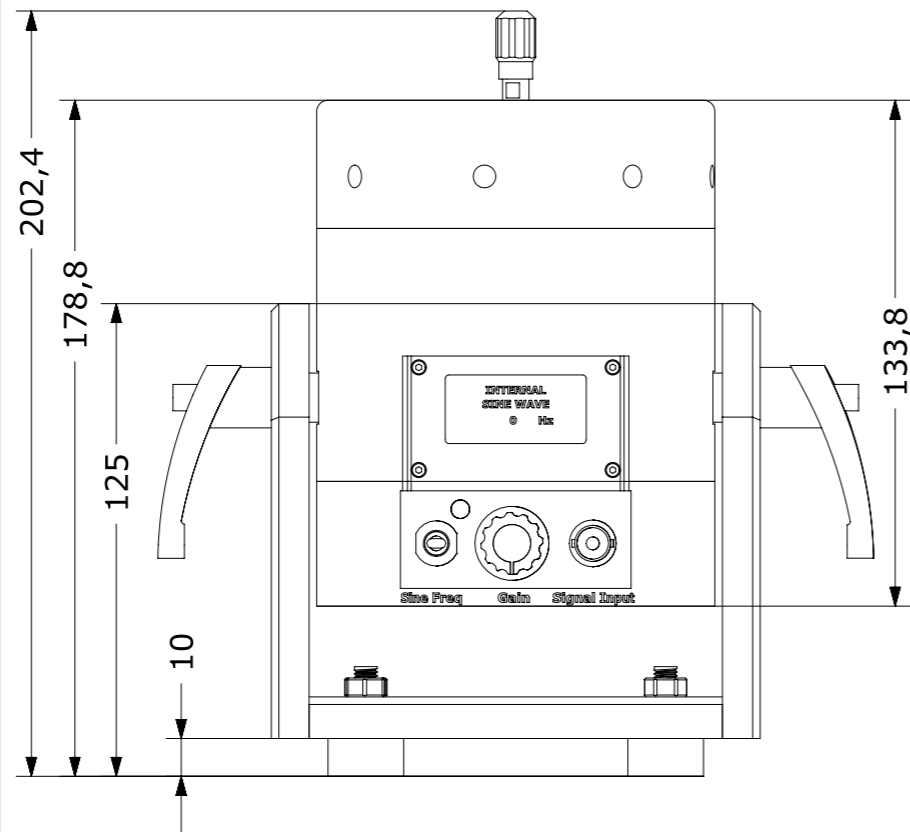
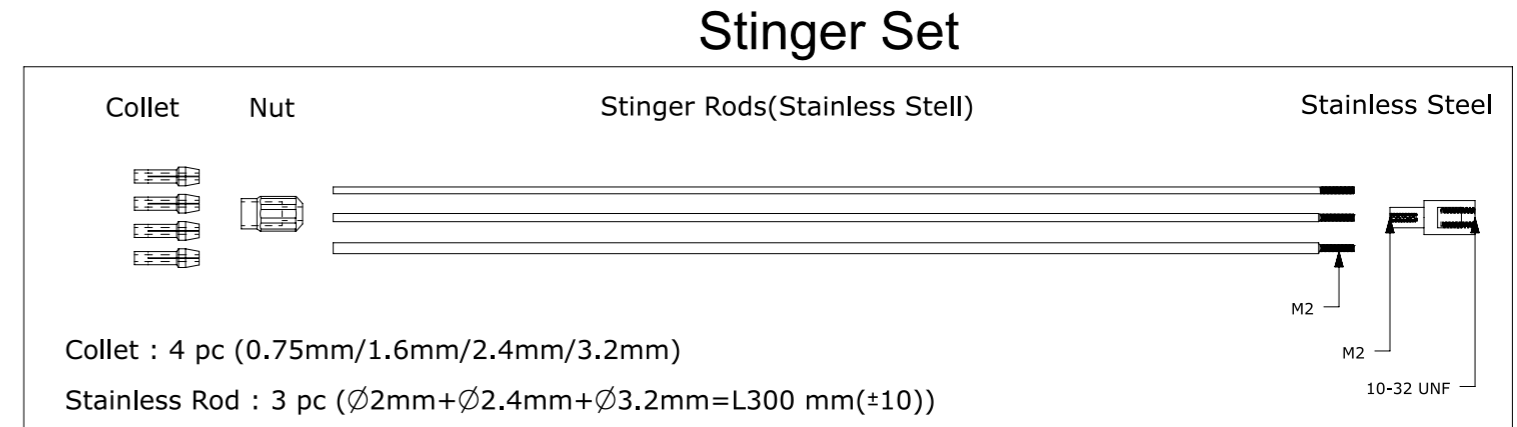
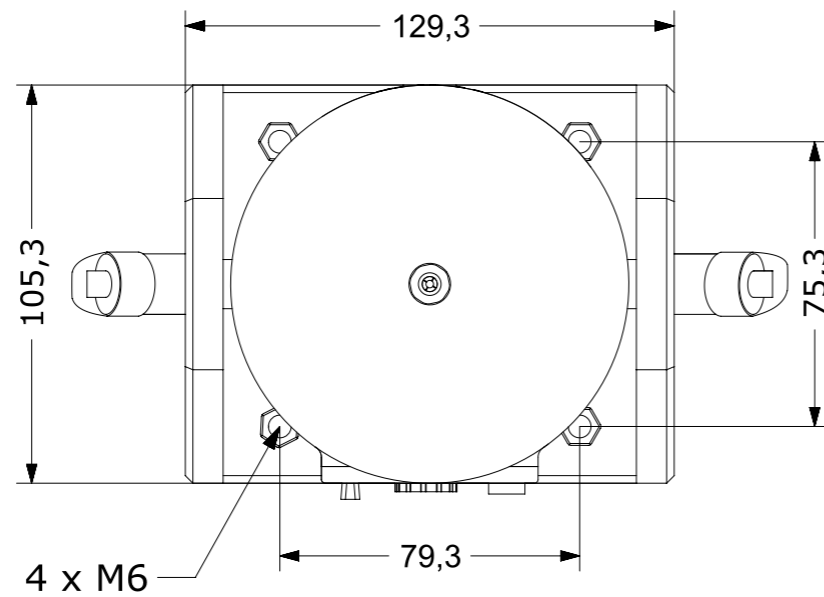


DYNALABS MODAL SHAKER(DYN-MS-20)

Output Force(Sinus)	20 N
Frequency Range	0-12 kHz
Displacement(P-P)	5 mm
Maximum Acceleration	40 g
Shaker Weight	4.1 kg
Cooling System	Natural Convection
Operating Temperature Range	5-35 °C
Suspension	Spring
Maximum Input Current	4A (RMS)
AMPLIFIER	INTERNAL
Power Supply Voltage	19 V (DC)
Power Suplly Current	4.74 A
External Signal Voltage Level	1 VAC(PEAK)



System Components : Electrodynamic Shaker +Power Adapter + Signal Cable(BNC-BNC)(5 meter) + R 1/8 Pneumatic Union + Stinger Set + User Manual

All dimensions in mm