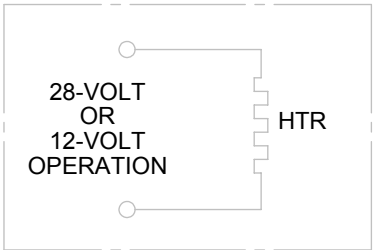
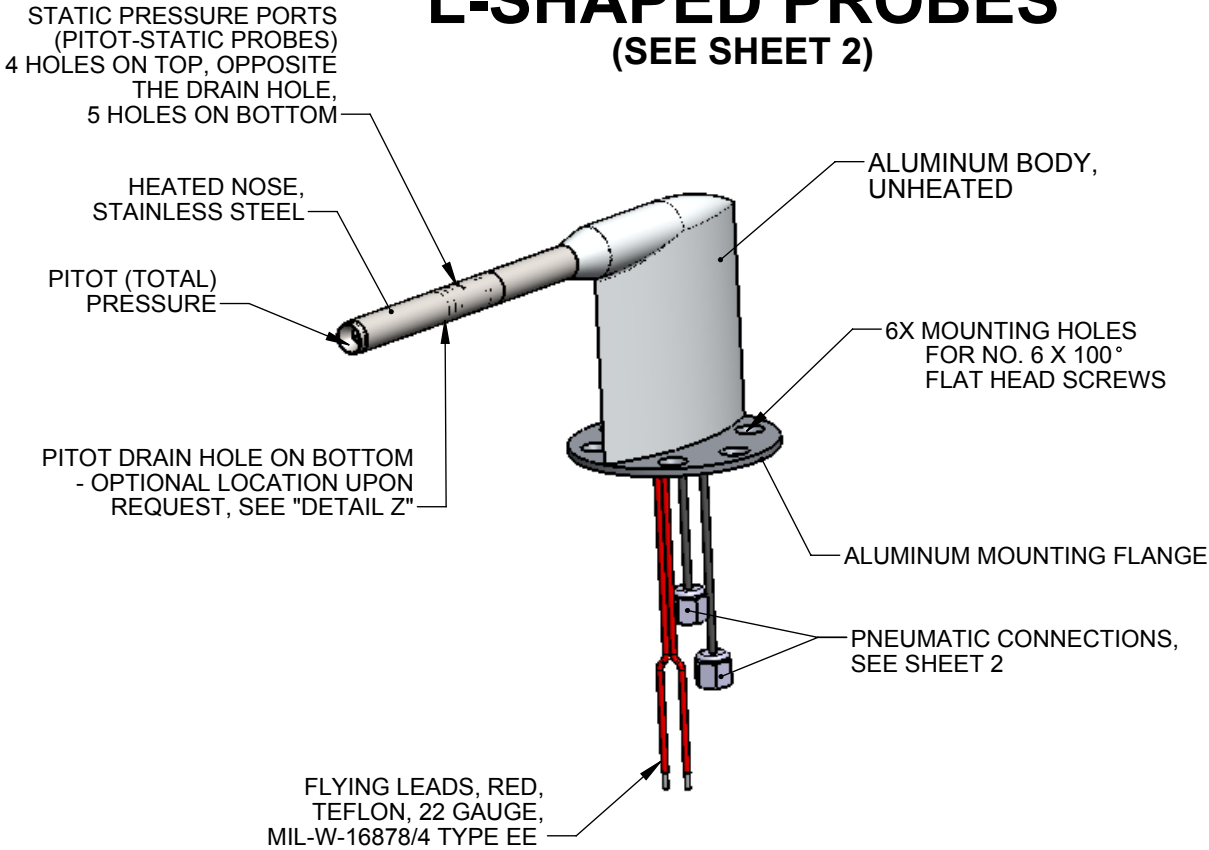


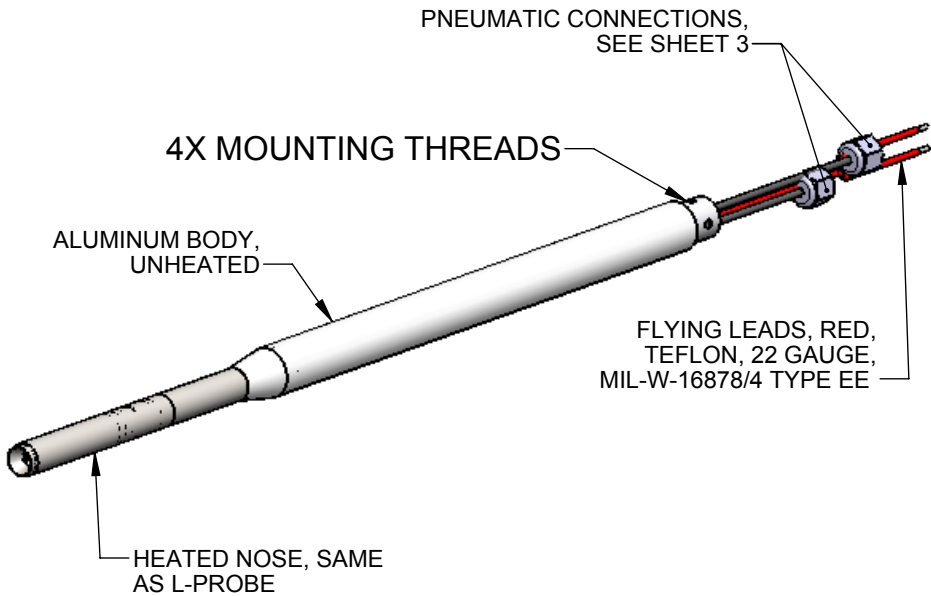
This drawing contains design and other information which is the property of SpaceAge Control, Inc. Except for rights expressly granted by contract to the United States Government, this drawing and data disclosed herein or herewith is not to be reproduced, used, or disclosed in whole or in part to anyone without the written permission of SpaceAge Control, Inc.

L-SHAPED PROBES  
(SEE SHEET 2)



SCHEMATIC

STRAIGHT PROBES  
(SEE SHEET 3)



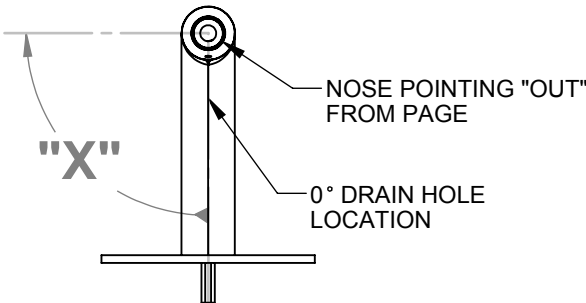
PART NO.	PROBE TYPE	SHAPE	INTERFACE	WEIGHT
4207-01	PITOT-STATIC	L-SHAPED	RIGID, FITTING	.24 LB MAX
4207-02	PITOT-STATIC	STRAIGHT	RIGID, FITTING	.24 LB MAX
4207-03	PITOT-STATIC	L-SHAPED	FLEX, NO FITTING	.29 LB MAX
4207-04	PITOT-STATIC	L-SHAPED	FLEX, FITTING	.24 LB MAX
4207-05	PITOT-STATIC	STRAIGHT	FLEX, NO FITTING	.24 LB MAX
4207-06	PITOT-STATIC	STRAIGHT	FLEX, FITTING	.24 LB MAX
4207-07	PITOT	L-SHAPED	RIGID, FITTING	.24 LB MAX
4207-08	PITOT	STRAIGHT	RIGID, FITTING	.24 LB MAX
4207-09	PITOT	L-SHAPED	FLEX, NO FITTING	.24 LB MAX
4207-10	PITOT	L-SHAPED	FLEX, FITTING	.29 LB MAX
4207-11	PITOT	STRAIGHT	FLEX, NO FITTING	.24 LB MAX
4207-12	PITOT	STRAIGHT	FLEX, FITTING	.24 LB MAX

- NOTES (UNLESS OTHERWISE SPECIFIED):
- DESCRIPTION: HEATED PITOT AND PITOT-STATIC PROBES, L-SHAPED AND STRAIGHT.
  - WEIGHT: SEE CONFIGURATION TABLE
  - HEATER CHARACTERISTICS: 28-VOLT, SELF-REGULATING. HEATER RESISTANCE INCREASES AS TEMPERATURE INCREASES. MAXIMUM POWER IS ACHIEVED IN HIGH AIRFLOW IN ICING CONDITIONS.
    - CONTINUOUS POWER (STEADY STATE): 50 WATTS MAX
    - POWER IN STILL AIR CONDITIONS: 30 WATTS MAX
    - INITIAL SURGE AT POWER-UP: 150 WATTS MAX (DROPS TO CONTINUOUS LEVELS IN LESS THAN 30 SECONDS)
  - ANTI-ICING PERFORMANCE: WITHSTANDS SEVERE IN-FLIGHT ICING CONDITIONS SUCH AS:
    - 30 ° C STATIC TEMPERATURE
    - 300 KNOTS TRUE AIRSPEED
    - 1.0 g/m<sup>3</sup> LIQUID WATER CONTENT

NOTE: THE NOSE IS HEATED BUT THE VERTICAL STRUT IS UNHEATED AND ICE CAN FORM OVER TIME. LIMIT THE TIME DURATION IN SEVERE CONDITIONS (PER ABOVE) TO 10 MINUTES MAXIMUM. A PROPORTIONALLY HIGHER DURATION IS POSSIBLE FOR LOWER LIQUID WATER CONTENT CONDITIONS, OR LOWER TRUE AIRSPEED CONDITIONS.

OPTIONS AVAILABLE UPON REQUEST:

- 12-VOLT HEATERS
- DRAIN HOLE ORIENTATION, SEE "DETAIL Z"
- PNEUMATIC CONNECTION TYPE AND LENGTH
- AIRCRAFT-SPECIFIC MOUNTS



DETAIL Z  
OPTIONAL DRAIN HOLE ORIENTATIONS,  
AVAILABLE UPON REQUEST (X = 90°, 180°, 270°)

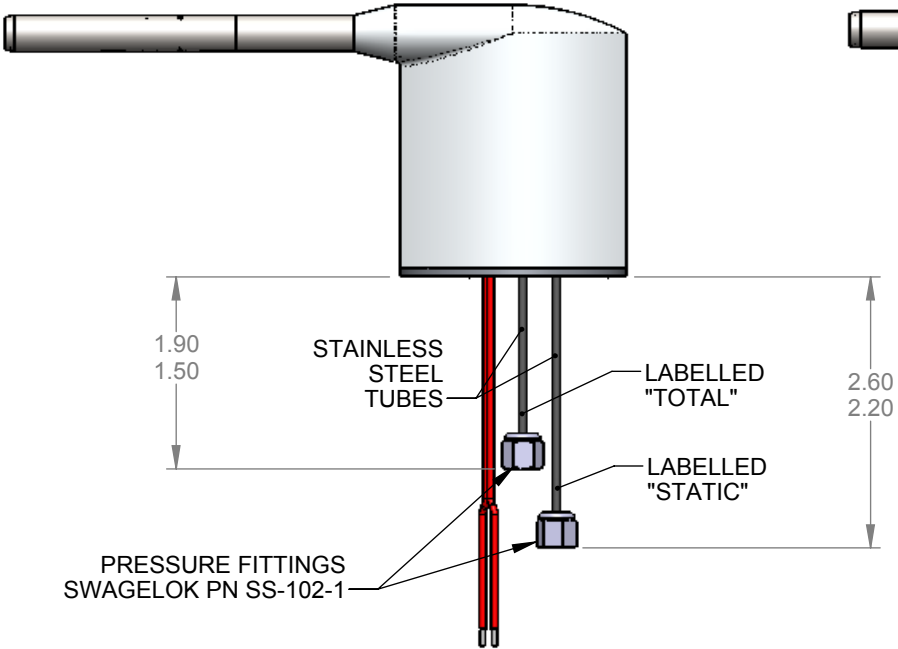
SPA PN 4207-XX  
(WHERE "XX" IS DASH NO.)

UNLESS OTHERWISE SPECIFIED DIMENSIONS ARE IN INCHES TOLERANCES ARE: DECIMALS      ANGLES		PROJECT 170			
		DRAWN <b>B.P.</b>	DATE 11-22-06		
DO NOT SCALE DRAWING		APPROVALS		<b>HEATED PROBE, MINIATURE, PITOT OR PITOT-STATIC</b>	
MATERIAL      SEE NOTES		CHECKED	DIGITAL - ON FILE		
FINISH      SEE NOTES		ENG	DIGITAL - ON FILE		
CAD GENERATED DRAWING, DO NOT MANUALLY UPDATE				SIZE <b>B</b>	CAGE CODE <b>34851</b>
				DWG. NO. <b>4207</b>	REV. <b>K</b>
				SCALE	CAD FILE:
				SHEET <b>1</b>	OF <b>3</b>

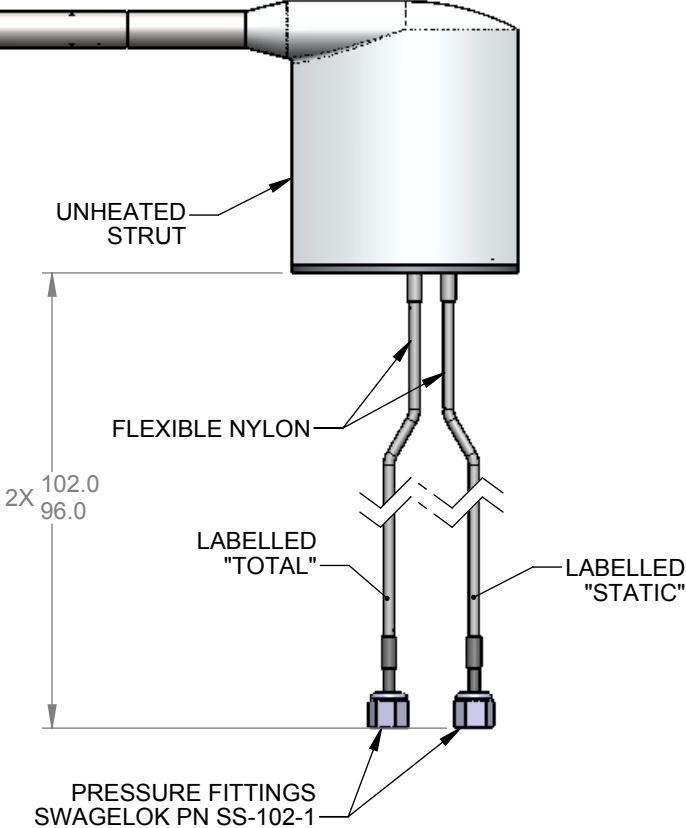
This drawing contains design and other information which is the property of SpaceAge Control, Inc. Except for rights expressly granted by contract to the United States Government, this drawing and data disclosed herein or herewith is not to be reproduced, used, or disclosed in whole or in part to anyone without the written permission of SpaceAge Control, Inc.

# L-SHAPED PROBES

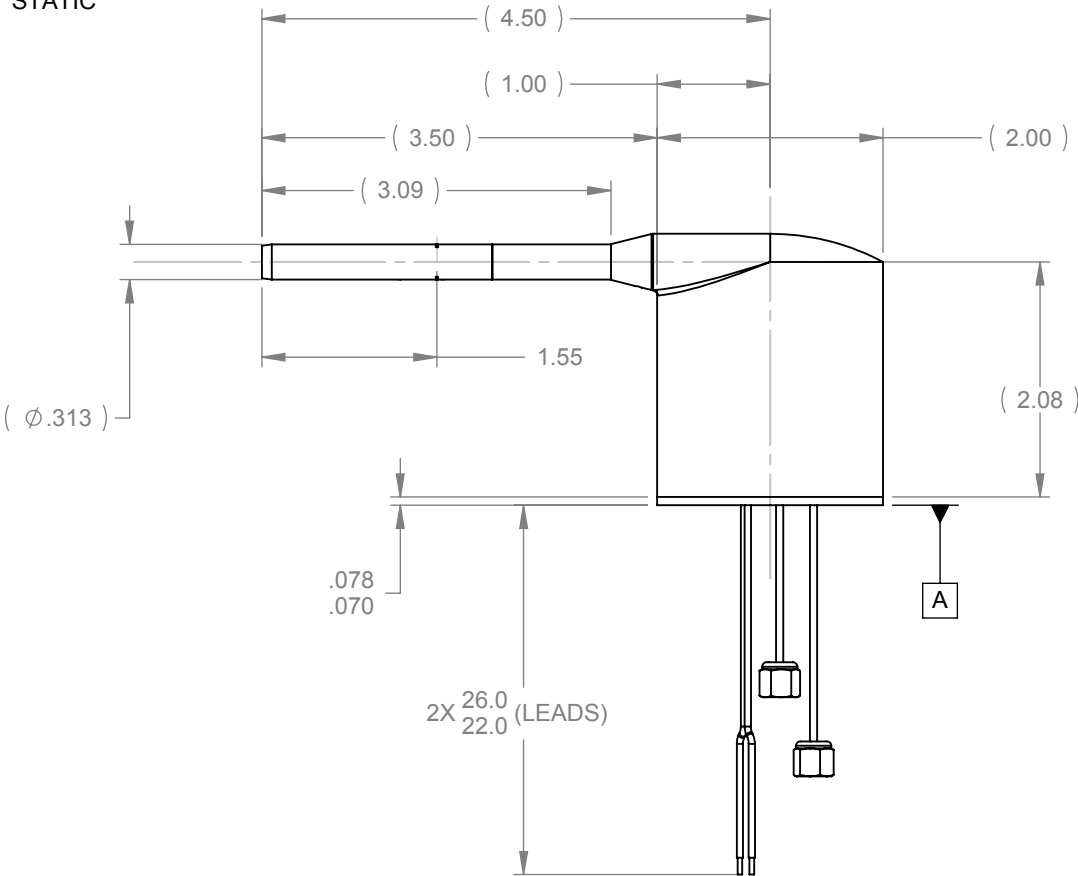
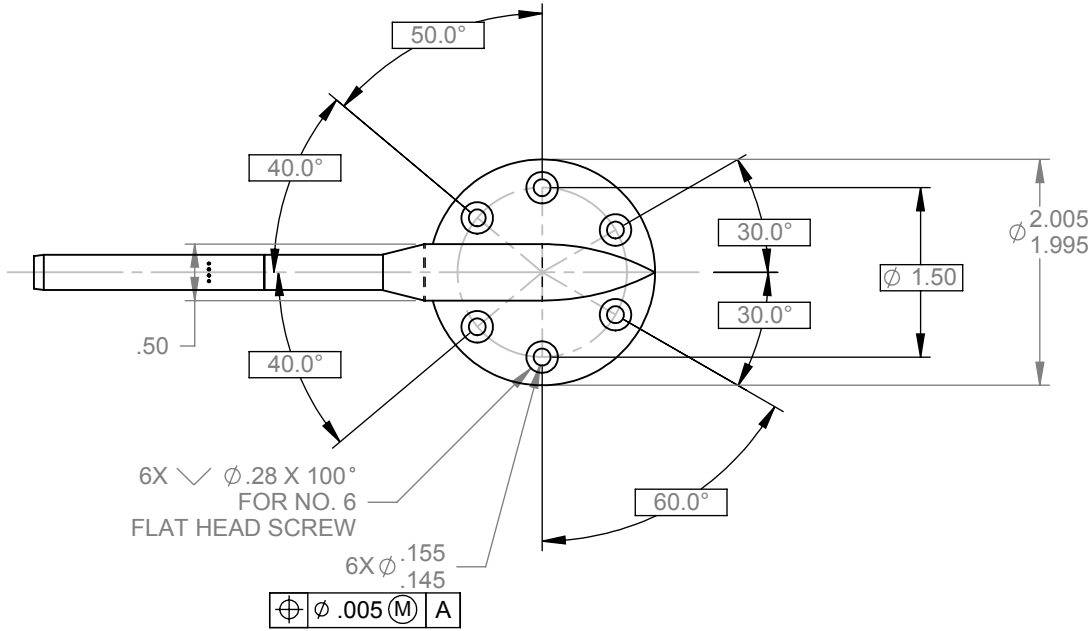
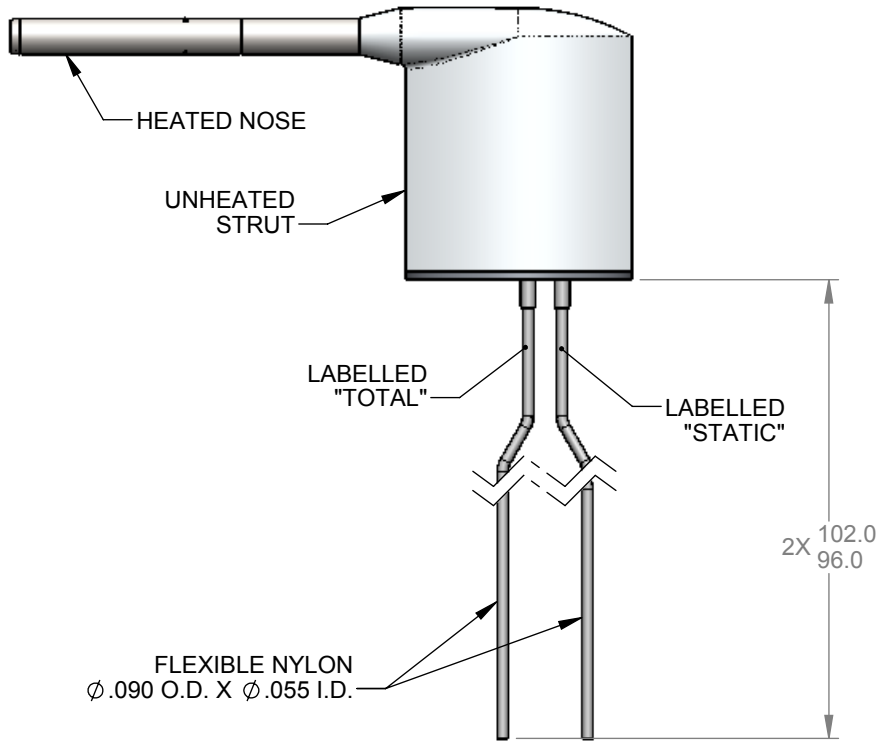
PROBE WITH SWAGELOK FITTINGS



PROBE WITH FLEX NYLON LINES AND SWAGELOK FITTINGS

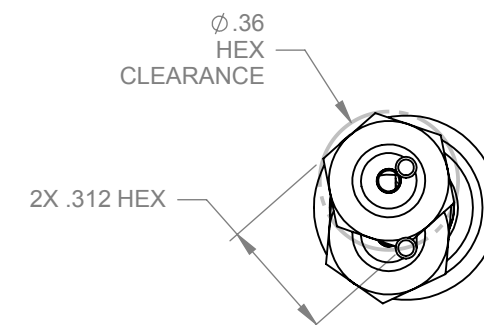


PROBE WITH FLEX NYLON LINES



## STRAIGHT PROBES

## STRAIGHT PROBE WITH RIGID TUBES AND SWAGelok FITTINGS



SIZE <b>B</b>	CAGE CODE <b>34851</b>	DWG. NO. <b>4207</b>	REV. <b>K</b>
SCALE		CAD FILE:	SHEET <b>3</b> OF <b>3</b>