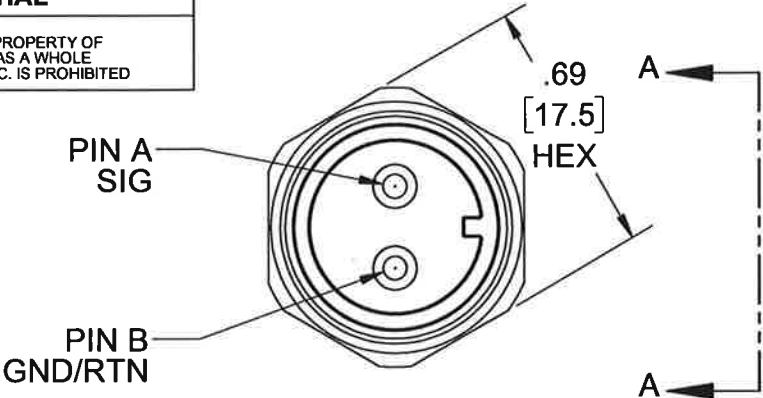
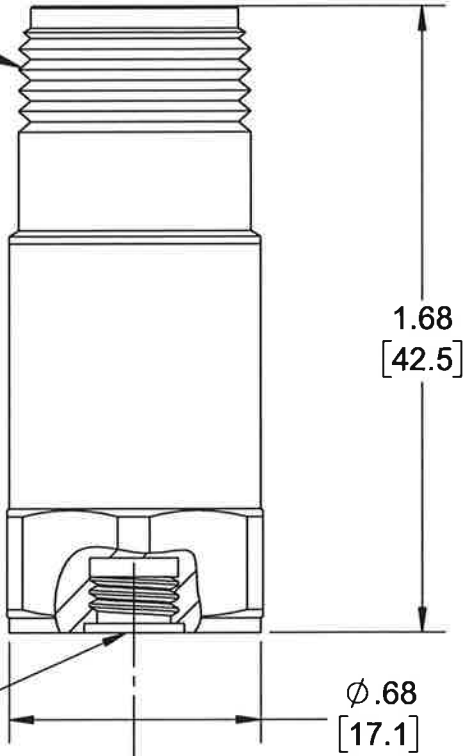


PROPRIETARY AND CONFIDENTIAL

THE INFORMATION CONTAINED IN THIS DRAWING IS THE SOLE PROPERTY OF  
DYTRAN INSTRUMENTS INC. ANY REPRODUCTION IN PART OR AS A WHOLE  
WITHOUT THE WRITTEN PERMISSION OF DYTRAN INSTRUMENTS INC. IS PROHIBITED

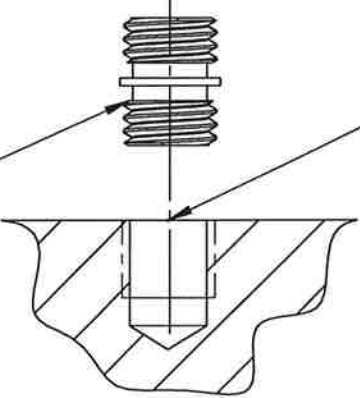


10SL-4P, 2-PIN CONNECTOR  
MIL-C-5015



1/4-28 UNF-2B  $\nabla$  .20

MOUNTING STUD SUPPLIED  
(MODEL 6176)



MOUNTING RECOMMENDATION:  
PREPARE MOUNTING SURFACE FLAT  
TO.001 TIR TAP 1/4-28 UNF-2B  $\nabla$  .20MIN.  
MOUTNING TORQUE 10-12 LB-IN.



VIEW A-A  
ROTATED 90° CW



MODEL	SENSITIVITY
3176B1	100mV/g
3176B2	10mV/g

DWG NO 127-3176B1 SH 1 REV B

REVISIONS

REV.	ECN	DESCRIPTION	BY/DATE	CHK	APPR
A	12601	ADDED MODEL 3176B2 AND VARIATION TABLE, REDRAWN IN SOLIDWORKS	LA 04/05/16	MH	LN
B	12911	3176B1; IS: 100mV/g, WAS: 1mV/g	EM 08/24/16	MH	W

UNLESS OTHERWISE SPECIFIED:  
INTERPRET DIM & TOL PER  
ASME Y14.5M - 1994.  
REMOVE BURRS.  
COUNTERSINK INTERNAL THDS  
90° TO MAJOR DIA.  
CHAM EXT THDS 45° TO MINOR DIA.  
THD LENGTHS AND DEPTHS ARE FOR  
MIN FULL THDS.  
DIMENSIONS APPLY AFTER FINISHING.

ALL MACHINED SURFACES:  $\checkmark$   
TOTAL RUNOUT WITHIN .005.  
BREAK SHARP EDGES .005 TO .010.  
MACHINED FILLET RADII .005 TO .010.  
WELDING SYMBOLS PER AWS A2.4.  
ABBREVIATIONS PER MIL-STD-12.

UNLESS OTHERWISE SPECIFIED:  
DIMENSIONS ARE IN INCHES.  
DIMENSIONS IN BRACKETS [ ] ARE IN  
MILLIMETERS TOLERANCES ARE:

DECIMALS	METRIC	ANGLES
.XX $\pm$ .03	X $\pm$ 0.8	$\pm$ 1°
.XXX $\pm$ .010	.XX $\pm$ 0.25	

APPROVALS		DATE
ORIG	NC	06/04/02
CHK	RA	06/04/02
APP	PML	09/23/05

DO NOT SCALE DRAWING

THIRD ANGLE PROJECTION  
USA

**MASTER**  
ONLY IF IN RED  
Chatsworth, CA

DYTRAN  
INSTRUMENTS, INC.


TITLE:  
**OUTLINE/INSTALLATION  
DRAWING, MODEL 3176B1**

SIZE <b>B</b>	CAGE CODE <b>2W033</b>	DWG NO <b>127-3176B1</b>	REV <b>B</b>
------------------	---------------------------	-----------------------------	-----------------

SCALE: 2:1

SHEET 1 OF 1

NOTES: UNLESS OTHERWISE SPECIFIED

Model Number 3176B1		PERFORMANCE SPECIFICATION				DOC NO PS3176B1					
		IEPE ACCELEROMETER				REV B, ECN 15646, 03/24/20					
		<ul style="list-style-type: none"><li>• HIGH SENSITIVITY</li><li>• ELECTRICALLY ISOLATED</li><li>• HERMETICALLY SEALED</li></ul>				<b>This family also includes:</b>					
		Model		Sensitivity		Range F.S ± 5 Volts		Max Vibration/Shock		Resonant Frequency	